



# EARTHSCAPES

Landscape Design Consultancy

**Public Spaces**

2021

**Earthscapes** is a decade old landscape architecture consultancy firm catering to niche clientele around the country. It has experience in landscape planning and design in a variety of sectors, viz. Real estate, corporate & commercial development, residences, institutions and public landscapes



Ar. Dipti Sharma  
*M.Arch*  
*Landscape, CEPT*  
Director



Ar. Sandip Patil  
*M.Arch*  
*Landscape, CEPT*  
Director



Ar. Tapan Modi  
*M.Arch Landscape,*  
*CEPT*  
Associate Director



Ar. Sohel Mansur  
*M.Arch Urban*  
*Design, CEPT*  
Associate Urban  
Designer



Ar. Neha Jain  
*B.Arch*  
*Aayojan Jaipur*  
Associate Architect

Earthscapes is spread across two studios: Ahmedabad and Mumbai, each headed by a principal landscape architect cum director and working independently.

We have a staff of 12 in Ahmedabad and 5 in Mumbai with four full time ISOLA accredited landscape architects. Our offices are equipped with the latest computer systems having centralized cloud backup and genuine software.

Our projects range across Bihar, Gujarat, Karnataka, Maharashtra, Rajasthan and Telangana. We have organized workflow with inhouse facilities for drawing management, tender process and specification systems.

**Ahmedabad :**

B-808 Titanium Square, Thaltej  
Cross Roads, Thaltej,  
Ahmedabad - 380054  
Ph: +91-79-40028544  
ahmedabad@earthscapes.in

**Mumbai:**

G-12, Ground floor, Zoom Plaza  
Mall, Gorai, Borivali West,  
Mumbai - 400092  
Ph: +91 8850 195 297  
mumbai@earthscapes.in

**Surat :**

703, Sns platina,  
Vesu, Surat 395007  
Ph: +91-9824186962  
surat@earthscapes.in

Landscape design consultancy  
Water management strategies  
Landscape Infrastructure  
Afforestation  
Street Design  
Street furniture  
Play areas  
Green Facades

STUDIOS

OFFICES

SERVICES

**Corporate**

Alok Impex Pvt Limited  
Ankit Gems Limited  
Ascendas Singbridge Pvt Ltd  
Enviro Control Associates Pvt Ltd  
KP Sanghvi & Sons  
Lemon Technomist  
Shairu Gems Diamonds Pvt Ltd

**Developers**

Arvind Infrastructure Ltd, Ahmedabad  
Bharat Infrastructure Pvt Ltd  
Crescent Realty, Mumbai  
Elements Projects  
Radius developers, Mumbai  
Godrej Properties Ltd  
Hubtown Ltd  
KP Sanghvi Infrastructures Pvt Ltd  
Oyster Living, Mumbai  
Rajesh Lifespaces, Mumbai  
Ravi group, Mumbai  
Shayona Land Corporation  
SPR Constructions Pvt Ltd  
Setha and Sonal developers, Mumbai  
7Star Company, Surat  
Addor Group, Ahmedabad  
Elements Projects, Ahmedabad

**Government**

Collector Office, Kutch  
Gujarat Urban Development Authority  
Gujarat State Disaster Management Agency  
Surat Municipal Corporation

**Institutions**

CK Pithawala College of Engineering and  
Technology  
Indian Institute of Management Udaipur  
Nalanda University Rajgir  
Raksha Shakti University Dehgam  
R K University



# 100 Parks





Project Details

**Client**  
UN Mehta Foundation  
**Location**  
Ahmedabad, India

**Area**  
4,000 m<sup>2</sup>  
**Date**  
2018

**About:**  
Badshah Villa is part of the 100 Parks project initiated by a group of landscape practices in Ahmedabad and supported by the UN Mehta Foundation.

**Scope of work :**  
Earthscapes prepared the Concept Design, Schematic Design, Design Development, Tender drawings and Specifications along with periodic site visits during installation stages.













# Surat Linear Park





## Project Details

### Client

Surat Municipal Corporation

### Location

Surat, India

### Area

166000 m<sup>2</sup>

### Date

2016

### About:

A 6km long 32 acre park is proposed in a high end suburb of Surat. The park aims to create a landmark public space that comprises of congregation areas, lawns, gardens, public amenities, sports areas and childrens play areas along the road.

### Scope of work :

Earthscapes prepared the Concept Design, Schematic Design, Design Development, Tender drawings and Specifications along with periodic site visits during installation stages.













# Smriti Van





**Project Details****Client**

Gujarat State Disaster Management Authority

**Location**

Bhuj Gujarat

**Area**

450 acres

**Date**

2013

**About**

Smriti Van is an earthquake victims memorial to commemorate the victims of 2001 Gujarat Earthquake. The memorial is envisaged as a forest with checkdams that will create a native plant environment in the arid region.

**Scope of work**

Earthscapes prepared the Concept Design, Schematic Design, Design Development, Tender drawings and Specifications along with periodic site visits during installation stages.





# Siddhpur Public Park





## Project Details

### Client

Tourism Corporation of Gujarat Ltd

### Location

Siddhpur Gujarat, India

### Area

16000 sqm

### Date

2012

### About:

A public park in a small town adjoining a temple, designed with traditional planting design techniques.

### Scope of work:

Earthscapes prepared the Concept Design, Schematic Design, Design Development, Tender drawings and Specifications along with periodic site visits during installation stages.





# AMC Road





## Project Details

### Client

Ahmedabads Municipal Corporation

### Location

Ahmedabad, India

### Area

6Km

### Date

2019

### About :

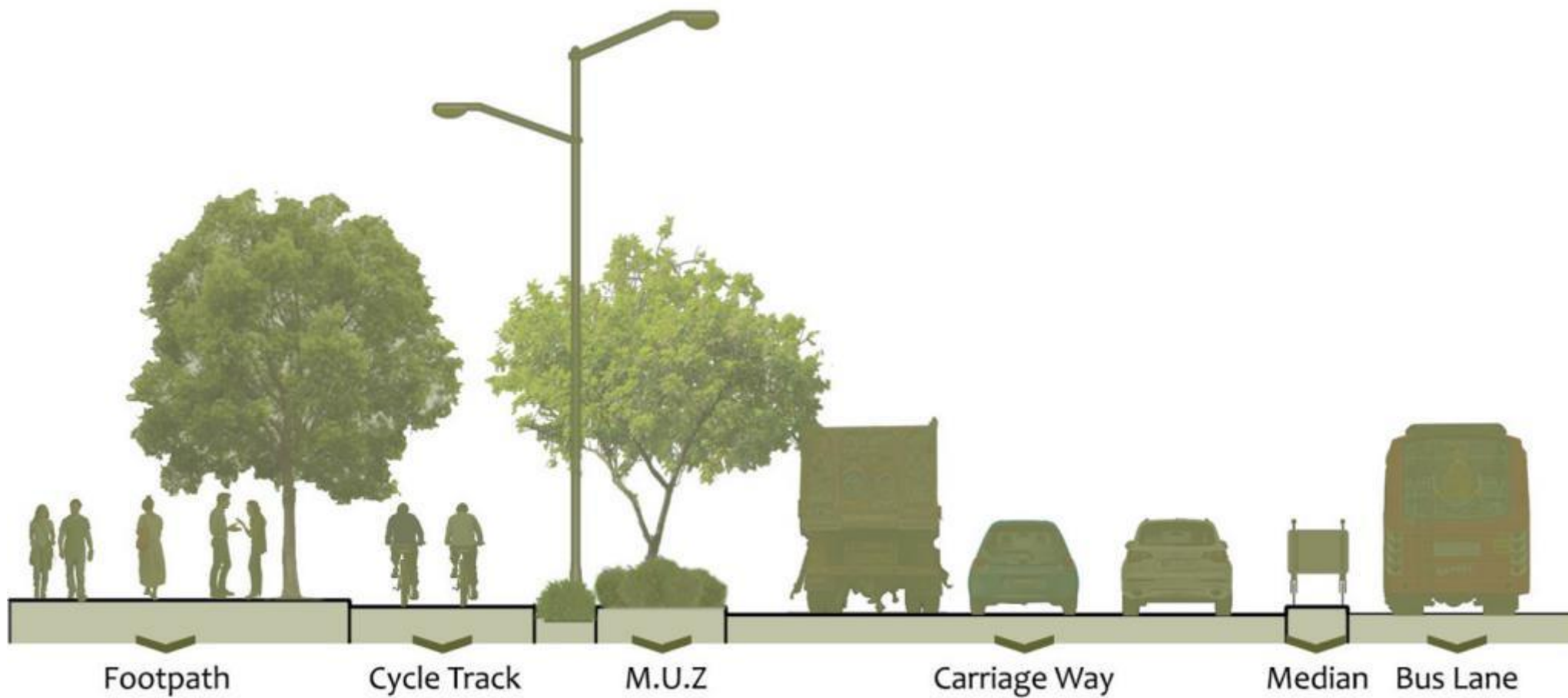
Ahmedabad Municipal Corporation is developing two model streets, complete with wide pavements, plantation and parking amenities at Science City Road and Nikol

### Scope of work :

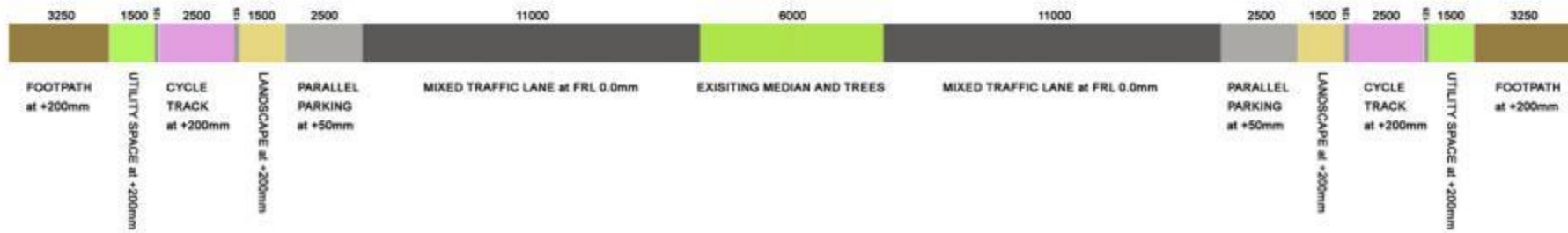
Earthscapes prepared the Concept Design, Schematic Design, Design Development, Tender drawings and Specifications along with periodic site visits during installation stages.













# Gandhinagar Public Parks





## Project Details

### Client

Gandhinagar Urban  
Development Authority

### Location

Gandhinagar, India

### Area

8000 sqm

### Date

2017

### About:

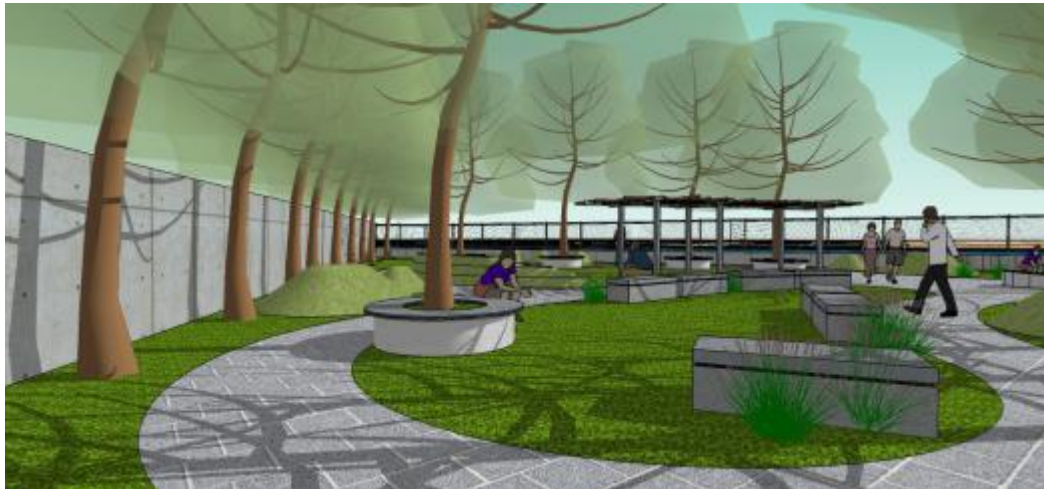
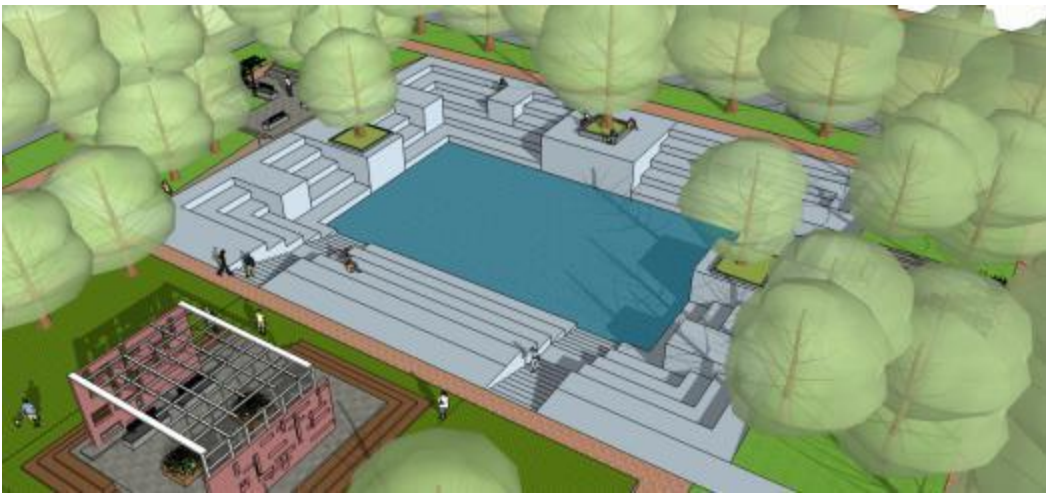
Urban Development Authority has proposed to develop neighbourhood gardens all around the city. ECPL+ECUBE has been selected to design four such gardens that provide recreational, sports, children's play and other amenities to residents.

### Scope of work :

Earthscapes prepared the Concept Design, Schematic Design, Design Development, Tender drawings and Specifications along with periodic site visits during installation stages.



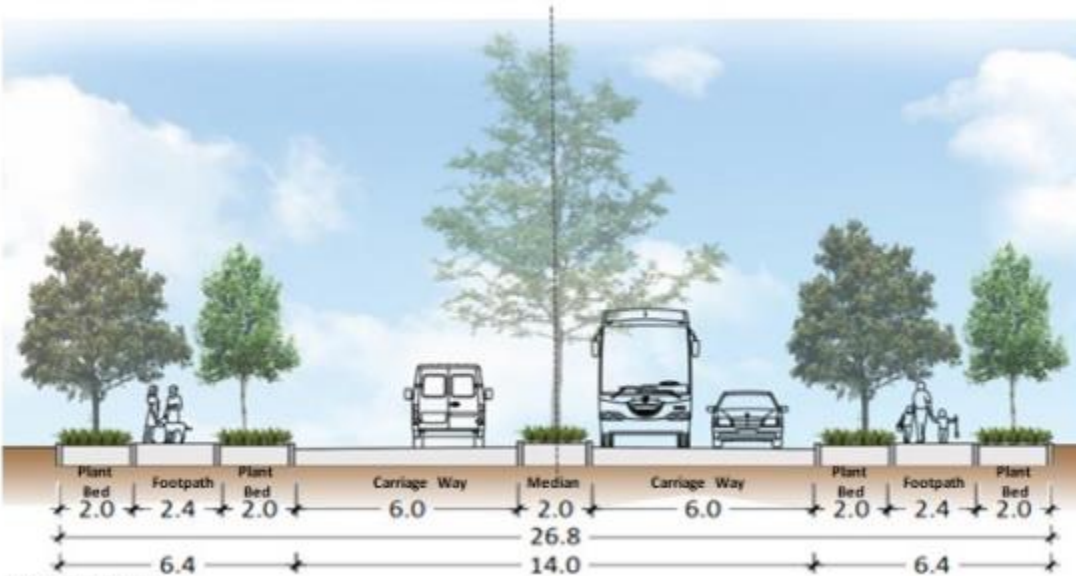




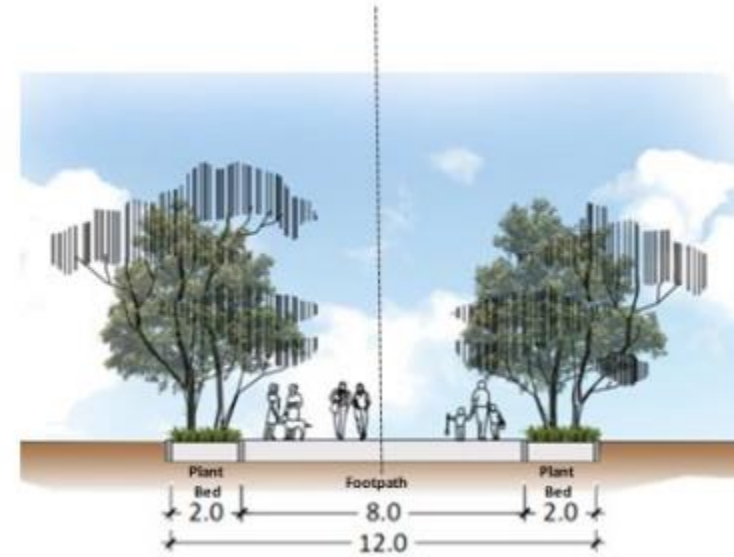


# Taranga Hills

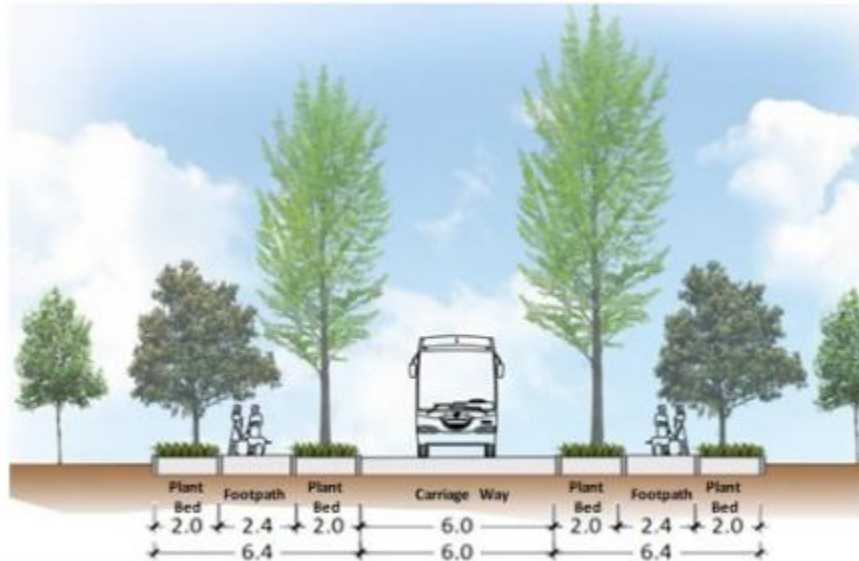
## Zoning Option 02 (Road Sections) :



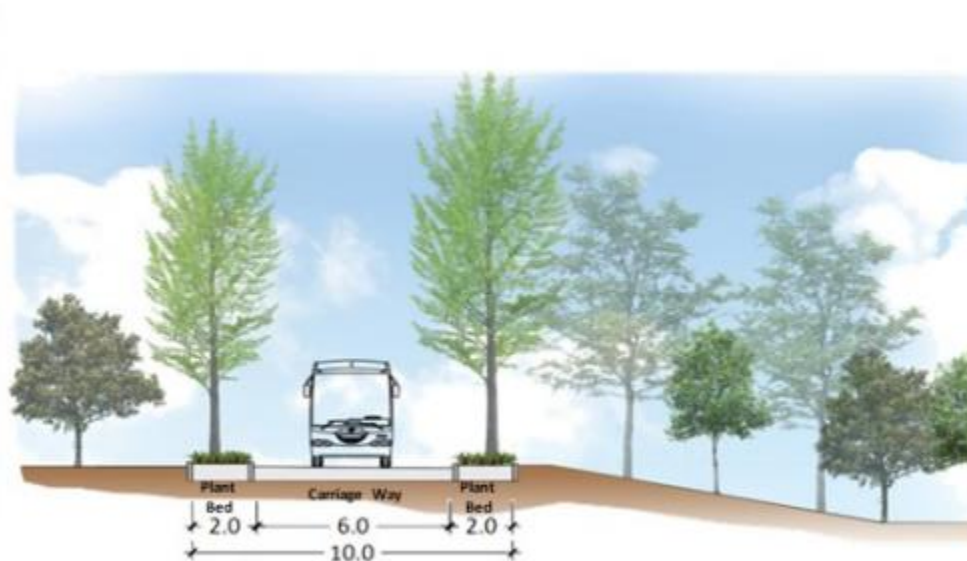
**MAIN ROAD**



**FOOTPATH**



**INTERNAL ROAD**



**INTERNAL ROAD @Slope**



LAND – Land Use Map (Surrounding) :



**Project Details**

**Client**  
Shri Digambar Jain Vir Vidhya Sangh Trust

**Location**  
Taranga, Gujarat

**Area**  
20 acres

**Date**  
2018

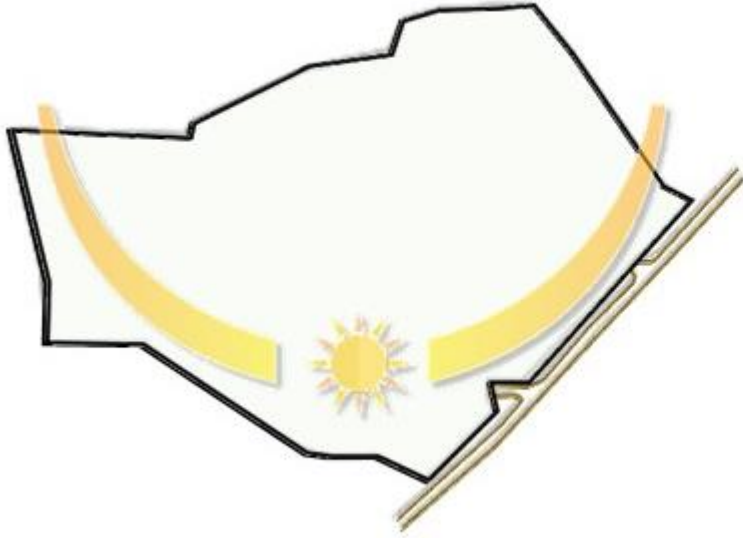
**About**  
An upcoming temple complex which includes all amenities for devotees to stay and pray

**Scope of work :**

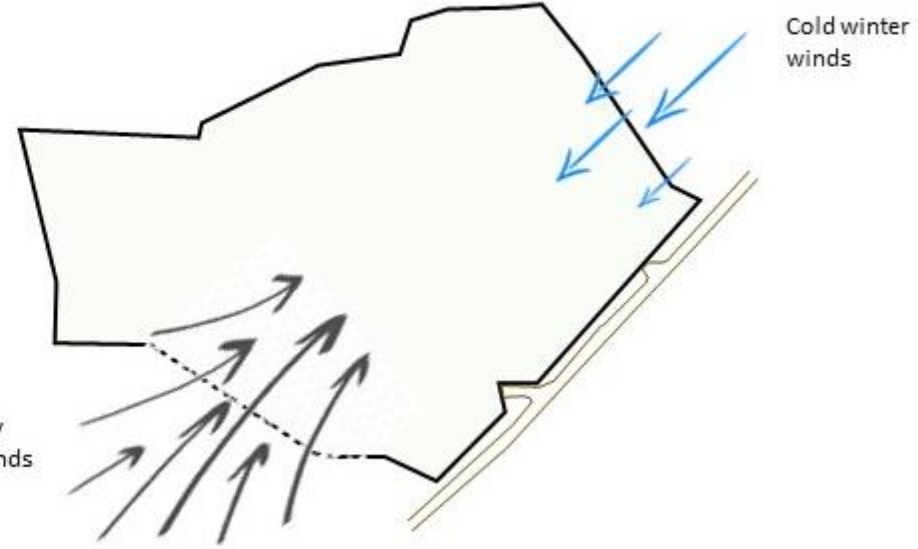
Earthscapes prepared the Concept Design, Schematic Design, Design Development, Tender drawings and Specifications along with periodic site visits during installation stages.



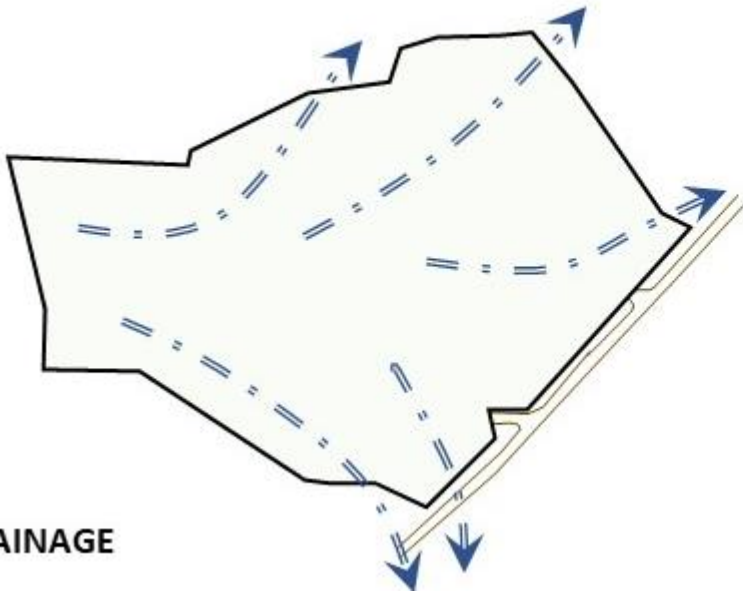
## Site Features :



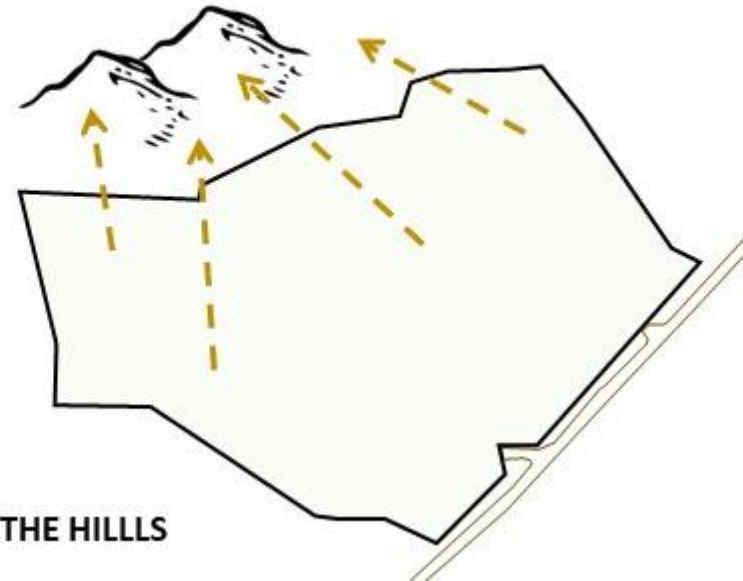
SUN PATH



WIND PATH



SITE DRAINAGE

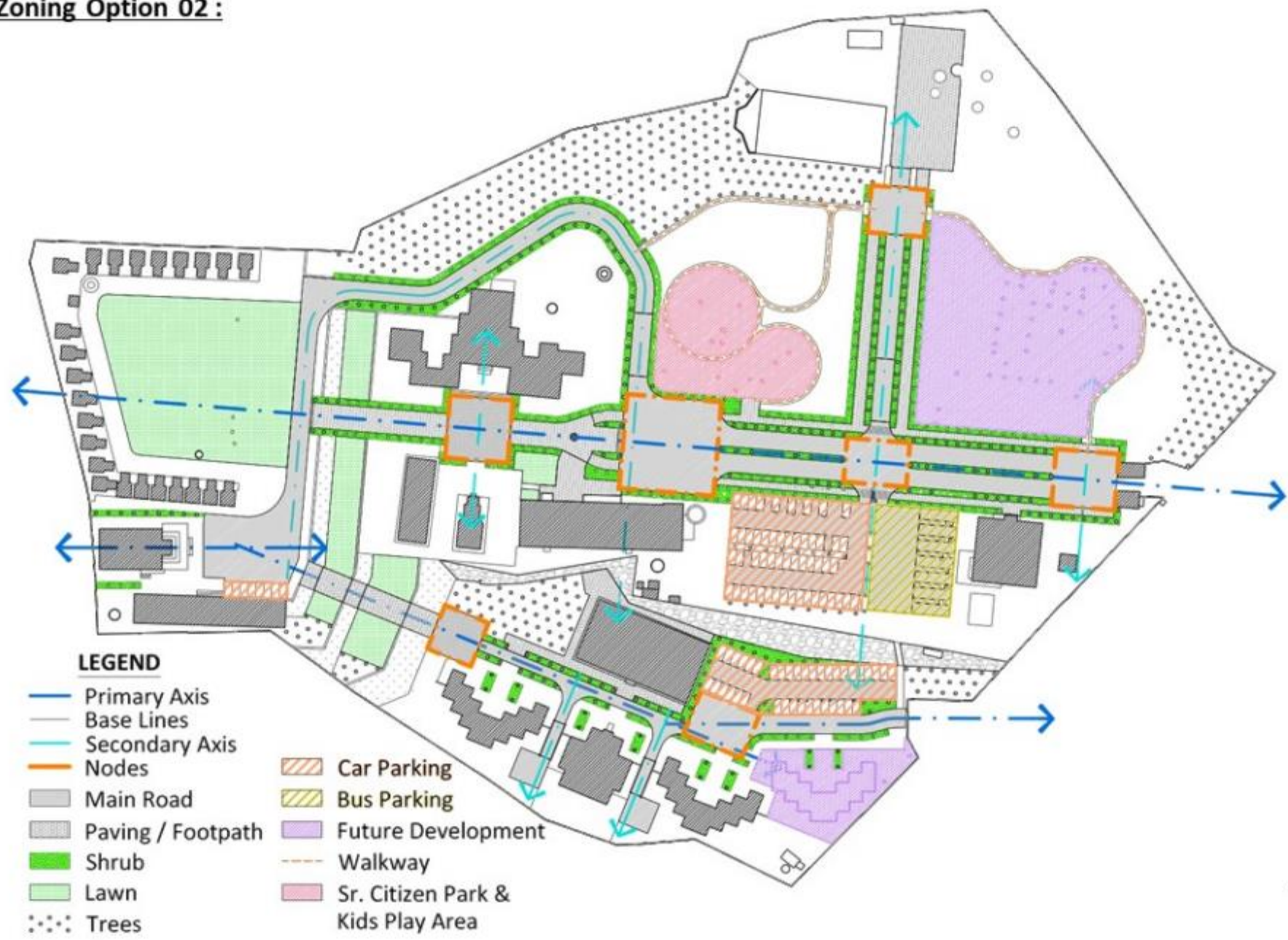


VIEW OF THE HILLS



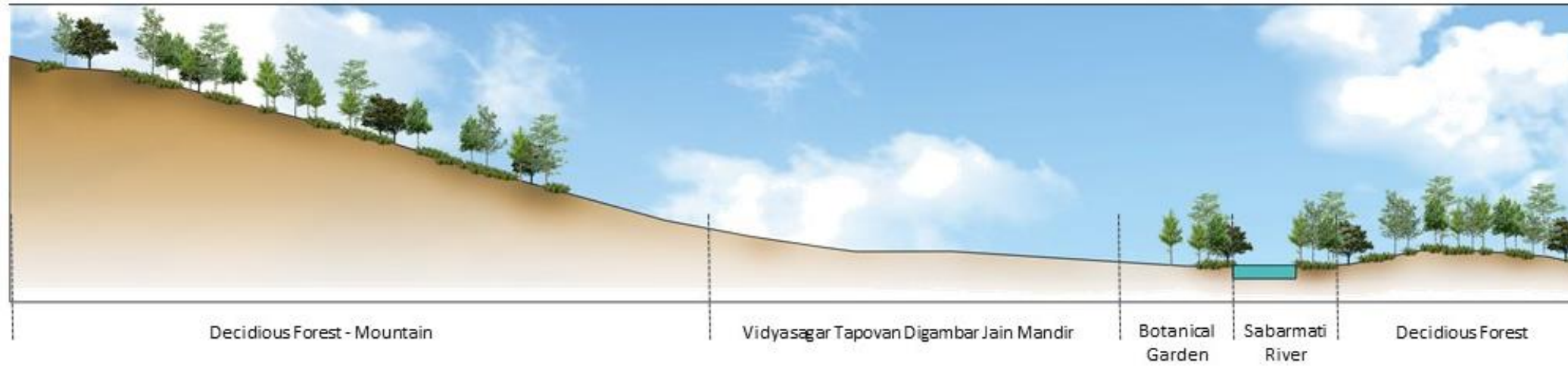


**Zoning Option 02 :**





## LAND – Context Sections :





# HBT Hubtown Ahmedabad





## Project Details

### Client

Hubtown Realty P Ltd

### Location

Ahmedabad, India

### Area

32000 sqm

### Date

2017

### About

A new intercity bus terminal was developed on PPP model, for which Earthscapes developed public plazas and movement areas

### Scope of work :

Earthscapes prepared the Concept Design, Schematic Design, Design Development, Tender drawings and Specifications along with periodic site visits during installation stages.





# HBT Mehsana





## Project Details

### Client

Hubtown Realty P Ltd

### Location

Mahesana, India

### Area

34000 sqm

### Date

2017

### About

A new intercity bus terminal was developed on PPP model, for which Earthscapes developed public plazas and movement areas

### Scope of work

Earthscapes prepared the Concept Design, Schematic Design, Design Development, Tender drawings and Specifications along with periodic site visits during installation stages.







to see our other work,  
please visit:  
<https://www.earthscapes.in/work>