



# EARTHSCAPES

Landscape Design Consultancy

**Institutions**

2021

**Earthscapes** is a decade old landscape architecture consultancy firm catering to niche clientele around the country. It has experience in landscape planning and design in a variety of sectors, viz. Real estate, corporate & commercial development, residences, institutions and public landscapes



Ar. Dipti Sharma  
*M.Arch*  
*Landscape, CEPT*  
Director



Ar. Sandip Patil  
*M.Arch*  
*Landscape, CEPT*  
Director



Ar. Tapan Modi  
*M.Arch Landscape,*  
*CEPT*  
Associate Director



Ar. Sohel Mansur  
*M.Arch Urban*  
*Design, CEPT*  
Associate Urban  
Designer



Ar. Neha Jain  
*B.Arch*  
*Aayojan Jaipur*  
Associate Architect

Earthscapes is spread across two studios: Ahmedabad and Mumbai, each headed by a principal landscape architect cum director and working independently.

We have a staff of 12 in Ahmedabad and 5 in Mumbai with four full time ISOLA accredited landscape architects. Our offices are equipped with the latest computer systems having centralized cloud backup and genuine software.

Our projects range across Bihar, Gujarat, Karnataka, Maharashtra, Rajasthan and Telangana. We have organized workflow with inhouse facilities for drawing management, tender process and specification systems.

**Ahmedabad :**

B-808 Titanium Square, Thaltej  
Cross Roads, Thaltej,  
Ahmedabad - 380054  
Ph: +91-79-40028544  
ahmedabad@earthscapes.in

**Mumbai:**

G-12, Ground floor, Zoom Plaza  
Mall, Gorai, Borivali West,  
Mumbai - 400092  
Ph: +91 8850 195 297  
mumbai@earthscapes.in

**Surat :**

703, Sns platina,  
Vesu, Surat 395007  
Ph: +91-9824186962  
surat@earthscapes.in

Landscape design consultancy  
Water management strategies  
Landscape Infrastructure  
Afforestation  
Street Design  
Street furniture  
Play areas  
Green Facades

STUDIOS

OFFICES

SERVICES

**Corporate**

Alok Impex Pvt Limited  
Ankit Gems Limited  
Ascendas Singbridge Pvt Ltd  
Enviro Control Associates Pvt Ltd  
KP Sanghvi & Sons  
Lemon Technomist  
Shairu Gems Diamonds Pvt Ltd

**Developers**

Arvind Infrastructure Ltd, Ahmedabad  
Bharat Infrastructure Pvt Ltd  
Crescent Realty, Mumbai  
Elements Projects  
Radius developers, Mumbai  
Godrej Properties Ltd  
Hubtown Ltd  
KP Sanghvi Infrastructures Pvt Ltd  
Oyster Living, Mumbai  
Rajesh Lifespaces, Mumbai  
Ravi group, Mumbai  
Shayona Land Corporation  
SPR Constructions Pvt Ltd  
Setha and Sonal developers, Mumbai  
7Star Company, Surat  
Addor Group, Ahmedabad  
Elements Projects, Ahmedabad

**Government**

Collector Office, Kutch  
Gujarat Urban Development Authority  
Gujarat State Disaster Management Agency  
Surat Municipal Corporation

**Institutions**

CK Pithawala College of Engineering and  
Technology  
Indian Institute of Management Udaipur  
Nalanda University Rajgir  
Raksha Shakti University Dehgam  
R K University



# Nalanda University





## Project Details

### Client

Nalanda University

### Location

Rajgir Bihar, India

### Area

450 acres

### Date

2012

### About:

Nalanda University is an autonomous international university promoted by India jointly with several Asian countries to create a unique global campus. The University launched an international design competition for its 450 acre campus at Rajgir, Bihar based on the tenets of net-zero development. This competition was won by Vastu-Shilpa Consultants for which ECPL were landscape architects. The masterplan is being finalized and development of the University shall begin in late 2014.

### Scope of work :

Earthscapes prepared the Concept Design, Schematic Design, Design Development, Tender drawings and Specifications along with periodic site visits during installation stages.





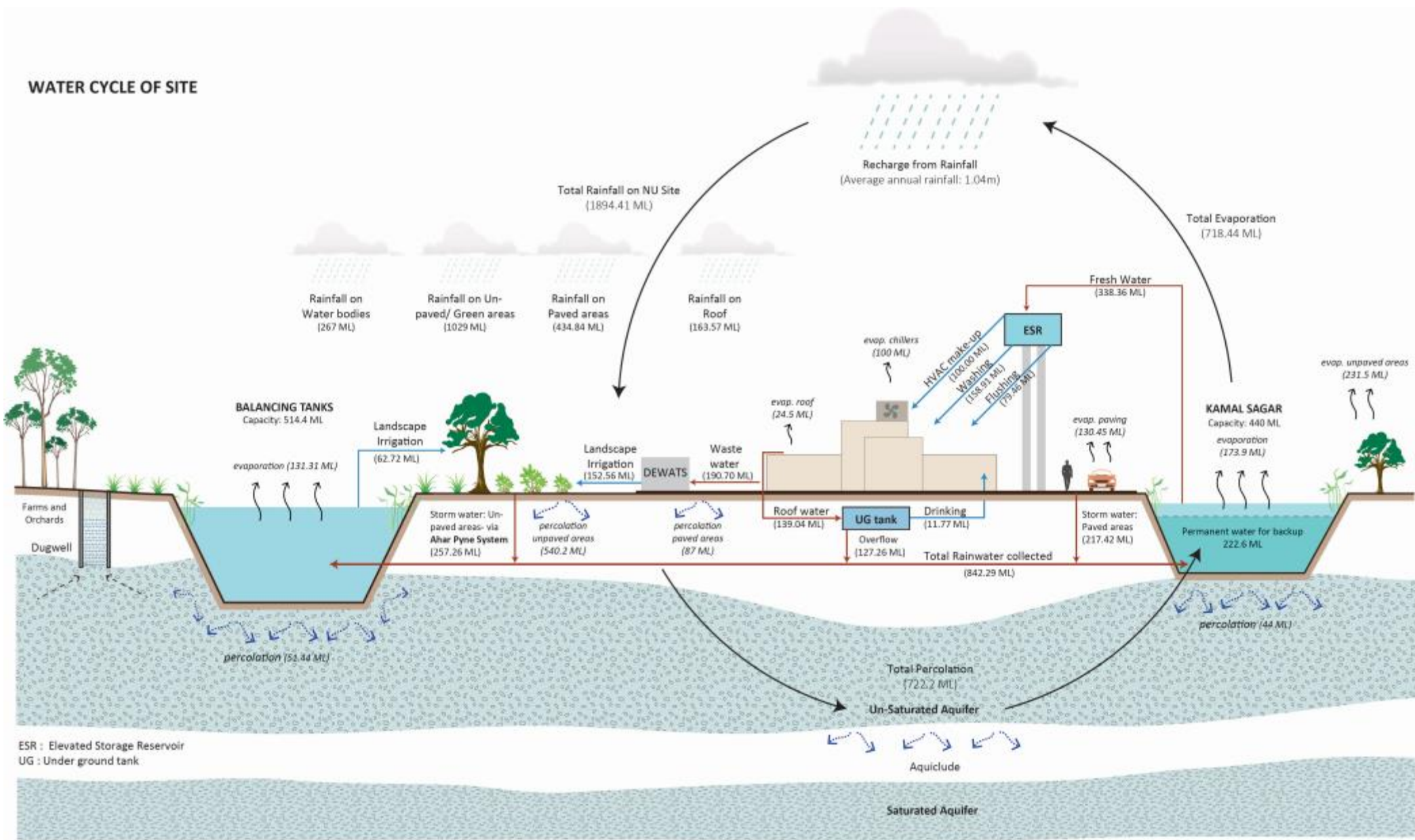






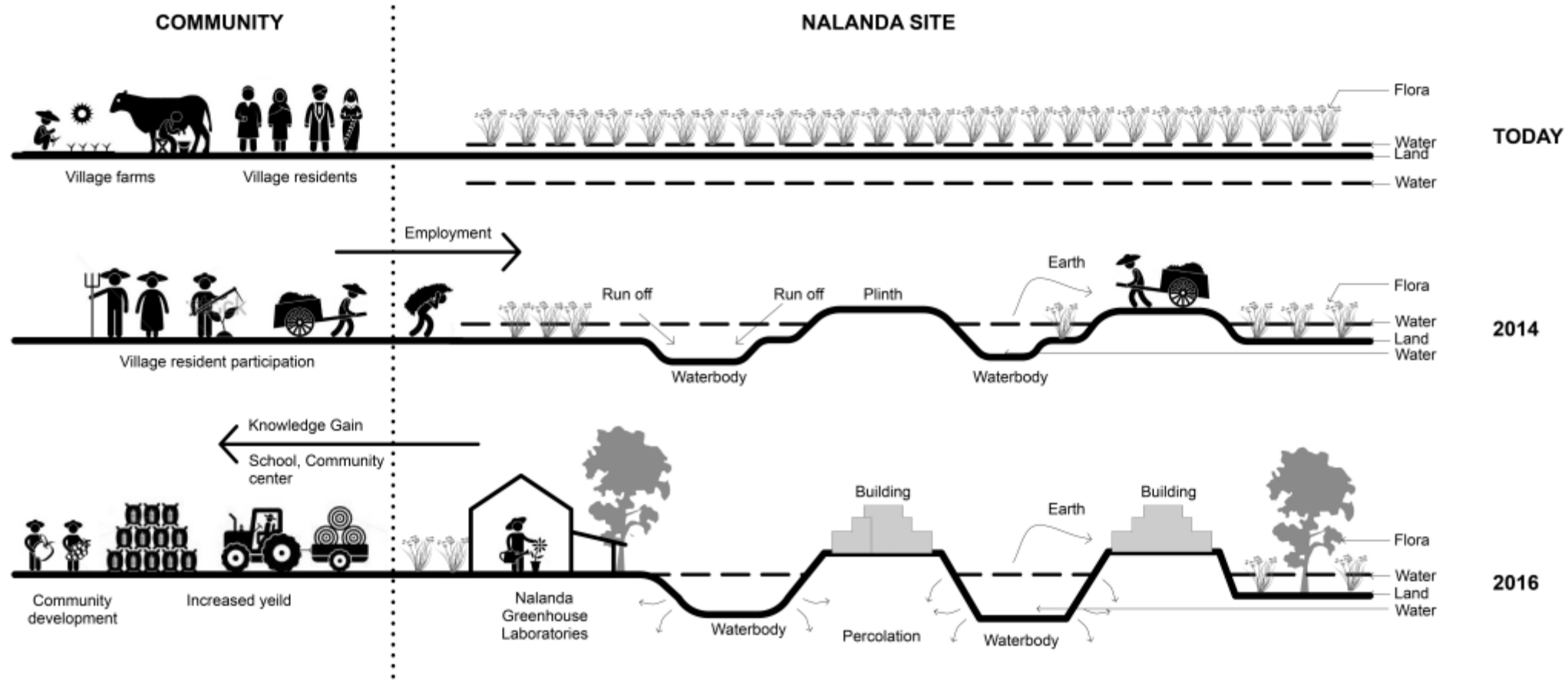


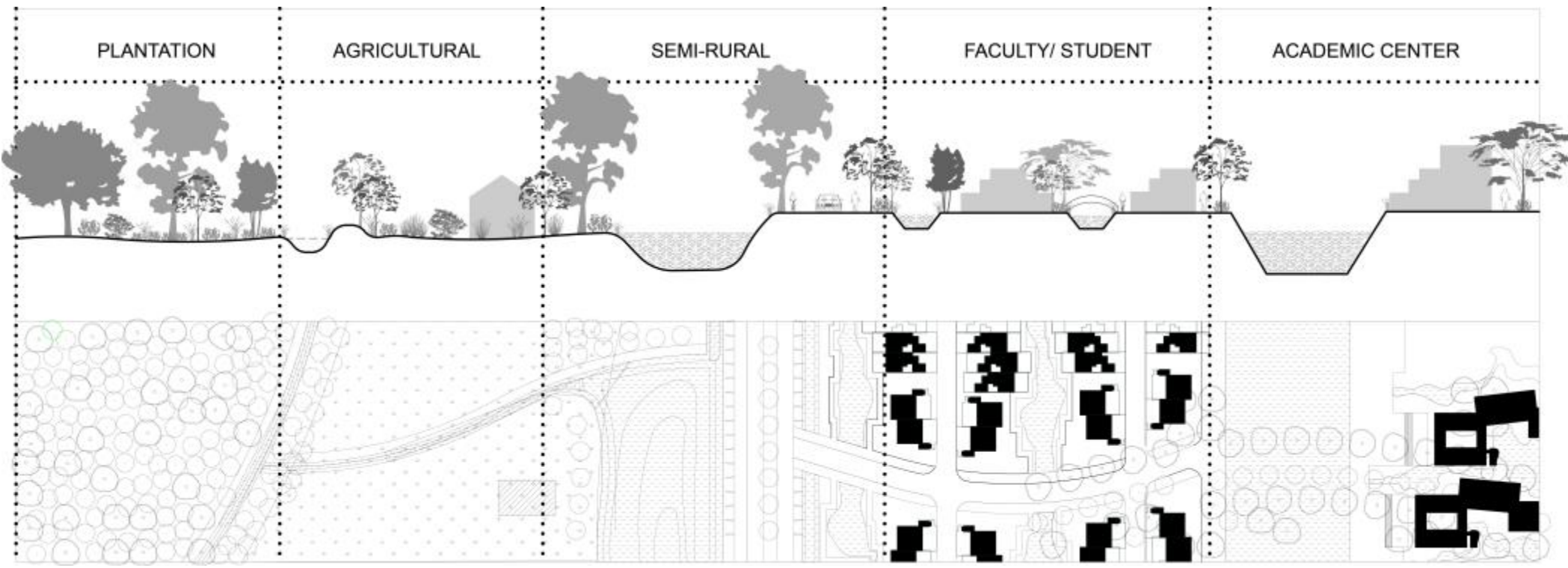
WATER CYCLE OF SITE













# North Star School





## Project Details

### Client

The Northstar School

### Location

Rajkot, India

### Area

18 acres

### Date

2014

### About:

A residential school in Rajkot where Earthscapes developed the masterplan including unique play structures

### Scope of work :

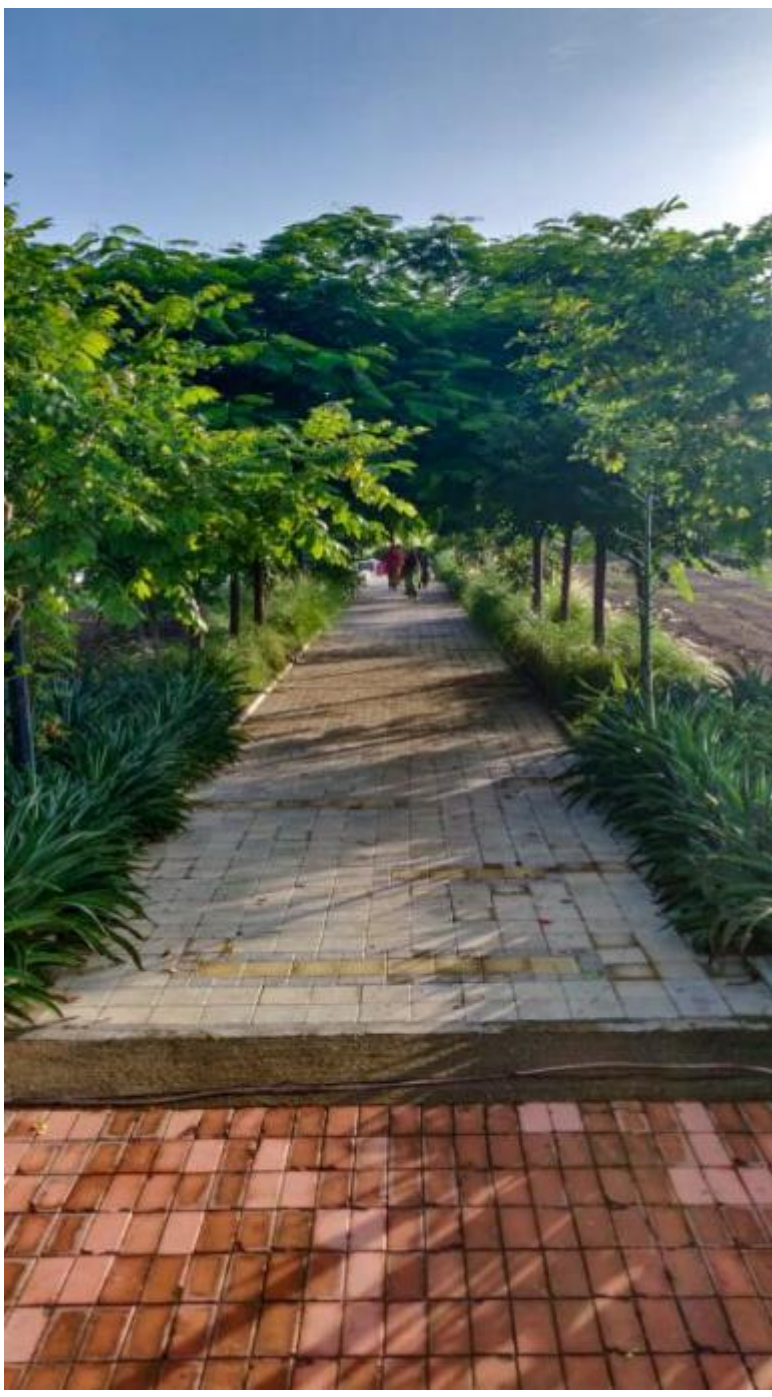
Earthscapes prepared the Concept Design, Schematic Design, Design Development, Tender drawings and Specifications along with periodic site visits during installation stages.





















# Northstar Nest





## Project Details

### Client

The North Star School

### Location

Rajkot, India

### Area

5,000 m<sup>2</sup>

### Date

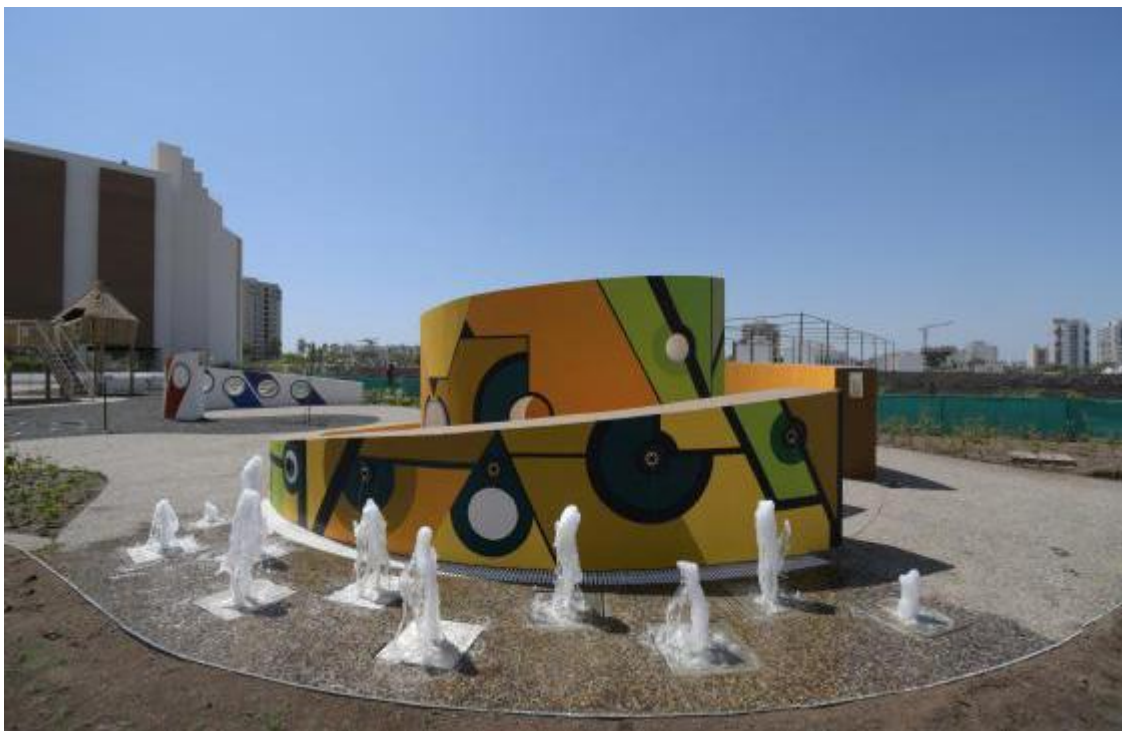
2018

### About:

A unique pre school with a large interactive play area for children consisting of multi-sensory experiences.

### Scope of work :

Earthscapes prepared the Concept Design, Schematic Design, Design Development, Tender drawings and Specifications along with periodic site visits during installation stages.













# Raksha Shakti Univeristy





## Project Details

### Client

Raksha Shakti University

### Location

Lavad, Gujarat

### Area

300 acres

### Date

2014

### About:

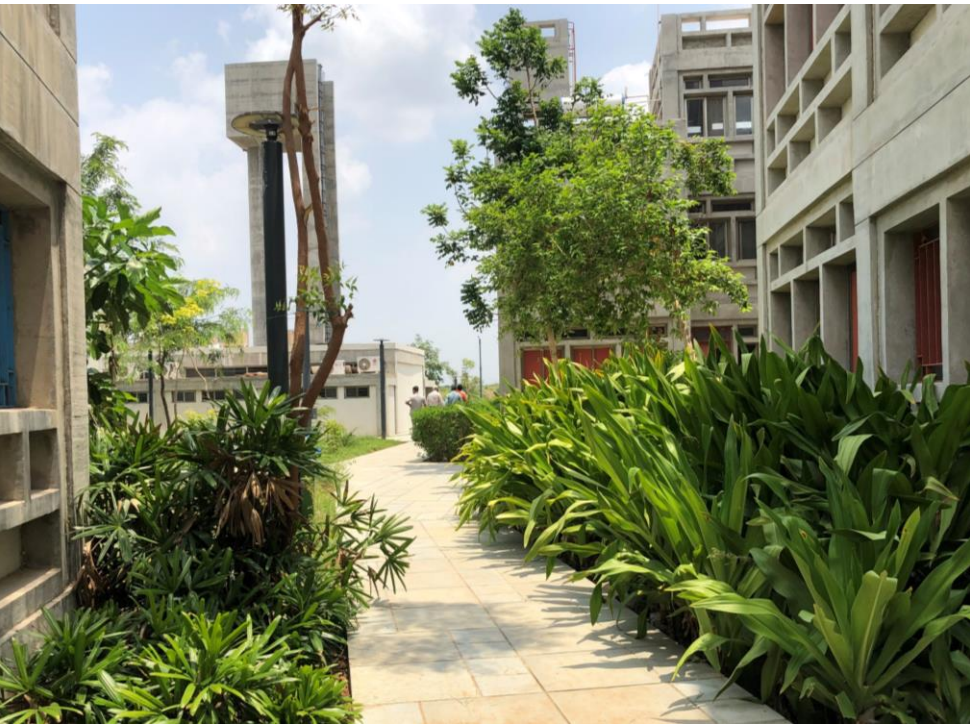
Raksha Shakti is India's premier police & security oriented University, having its proposed 200 acre campus outside Dehgam near Ahmedabad. The campus lies on ravinous land of River Meshwo. Landscape master planning involved techniques to reclaim the landscape as well as store & recharge water for the campus

### Scope of work :

Earthscapes prepared the Concept Design, Schematic Design, Design Development, Tender drawings and Specifications along with periodic site visits during installation stages.



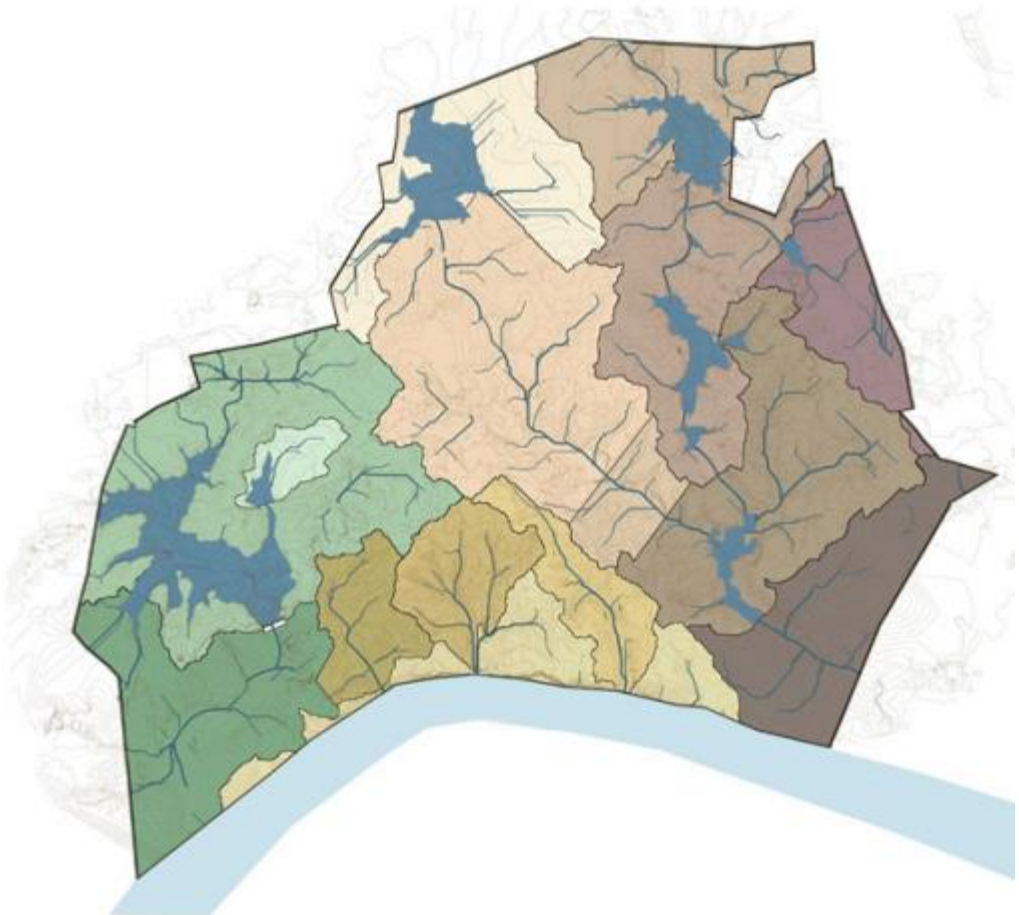














# RK University





## Project Details

### Client

R K University

### Location

Rajkot, India

### Area

2 acres

### Date

2017

### About

City campus for a private University, where Earthscapes envisaged multi functional spaces to be used throughout the day

### Scope of work :

Earthscapes prepared the Concept Design, Schematic Design, Design Development, Tender drawings and Specifications along with periodic site visits during installation stages.





# Scindia School





## Project Details

### Client

The Scindia School

### Location

Gwalior, India

### Area

200 acres

### Date

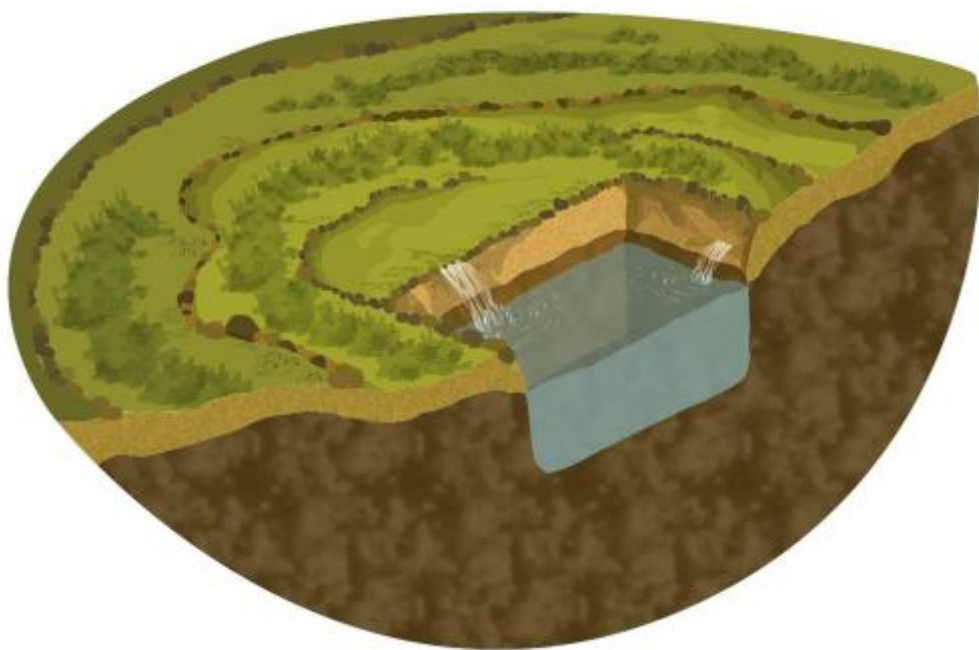
2018

### About:

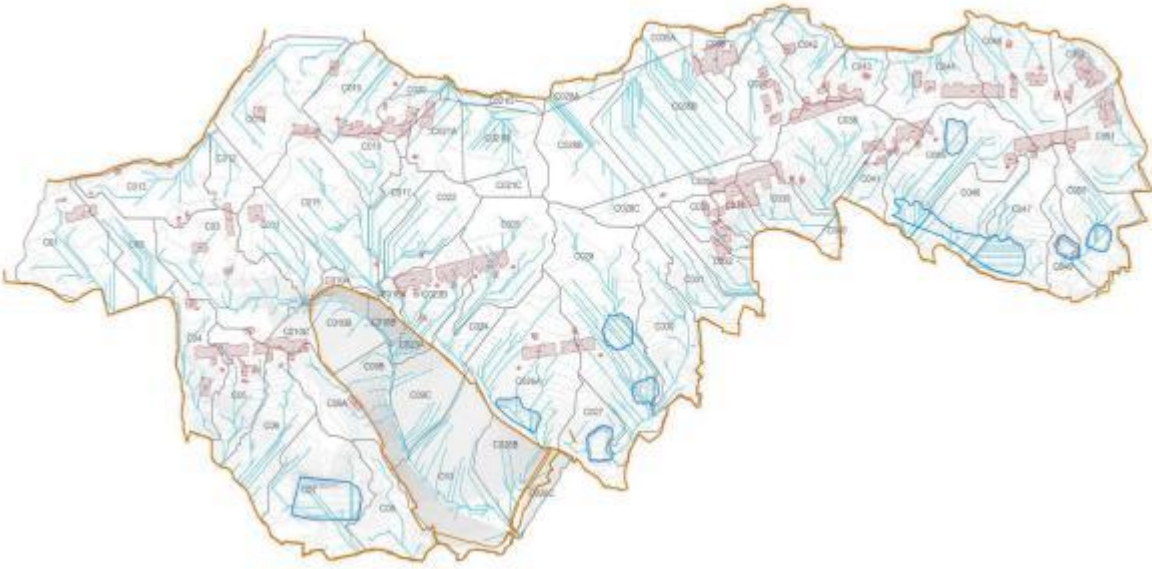
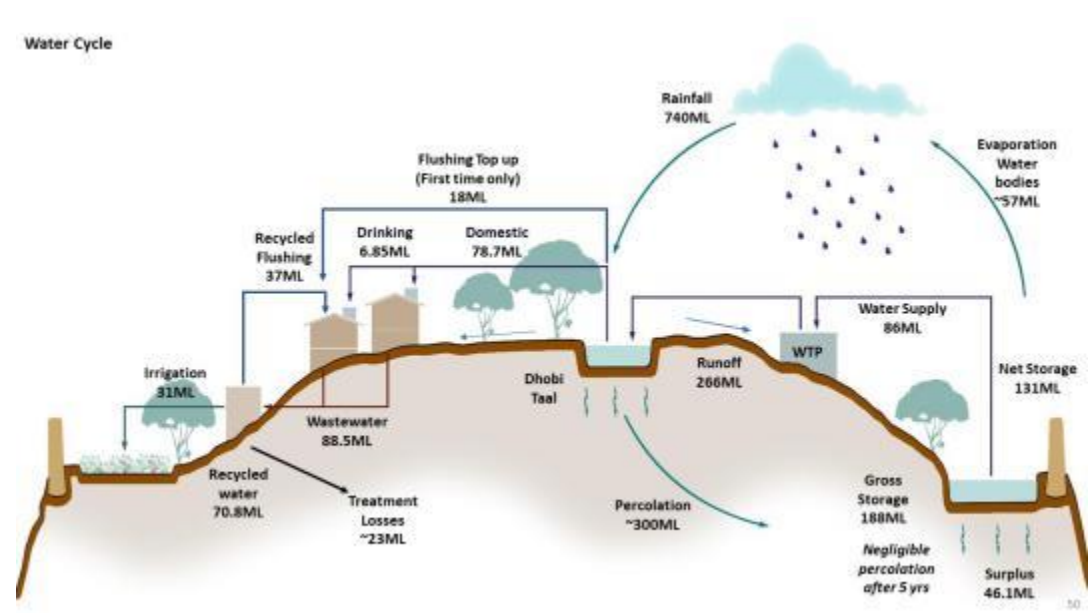
Water management master plan for rainwater harvesting and self sustenance for one of the oldest boarding schools in India.

### Scope of work :

Earthscapes prepared the Concept Design, Schematic Design, Design Development, Tender drawings and Specifications along with periodic site visits during installation stages.









# IIM Udaipur



Proposed Landscape Masterplan



**Project Details****Client**

IIM Udaipur

**Location**

Udaipur, India

**Area**

400 acres

**Date**

2011

**About:**

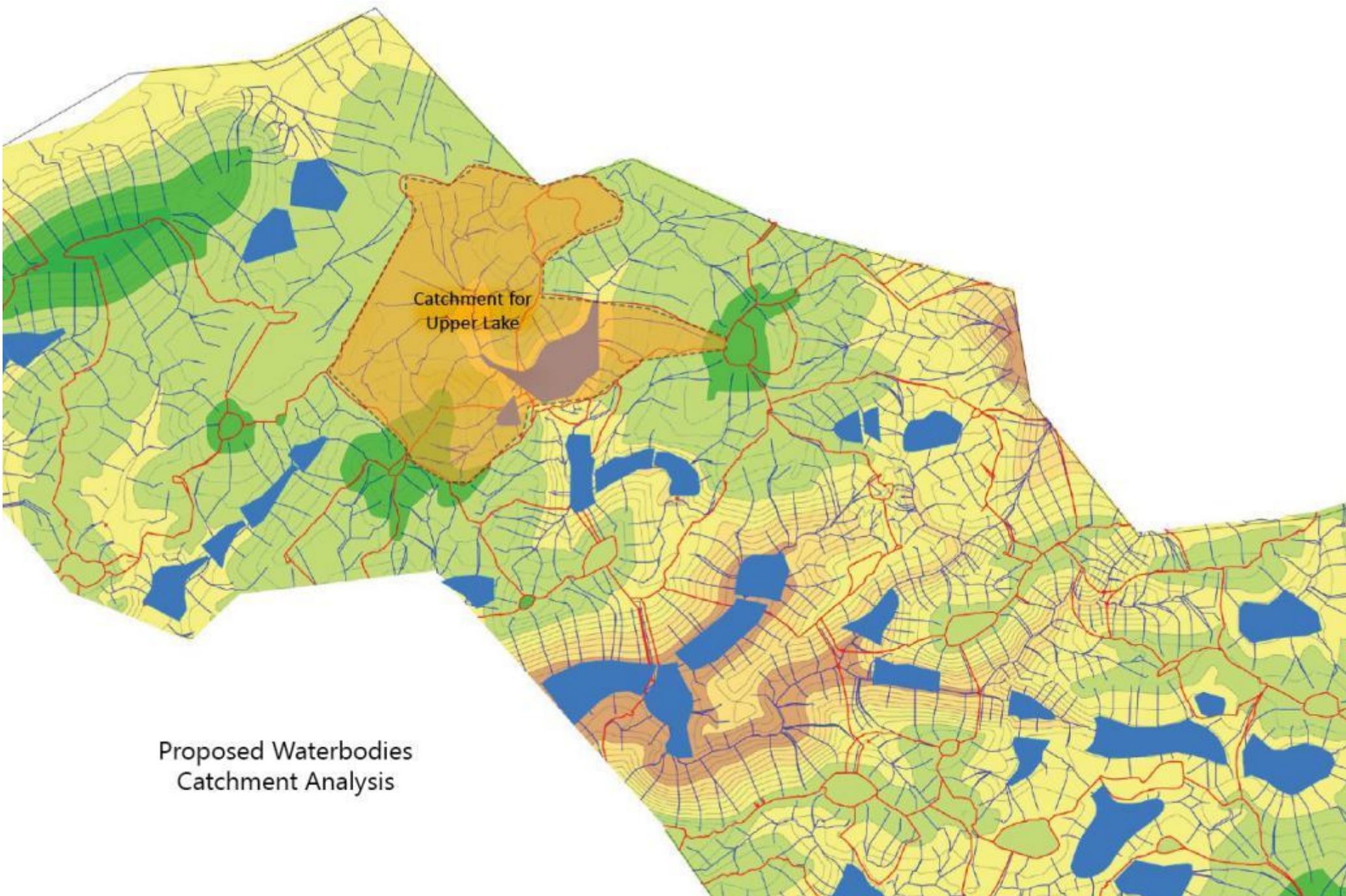
The Indian Institute of Management at Udaipur was established a year ago, and is one of the prime management institutes in the country.

Design of its main campus was selected from a competition, and is lead by Vastu-Shilpa Consultants, who also designed IIM Bangalore. IIM wishes to create a sustainable campus that will reflect the local landscape.

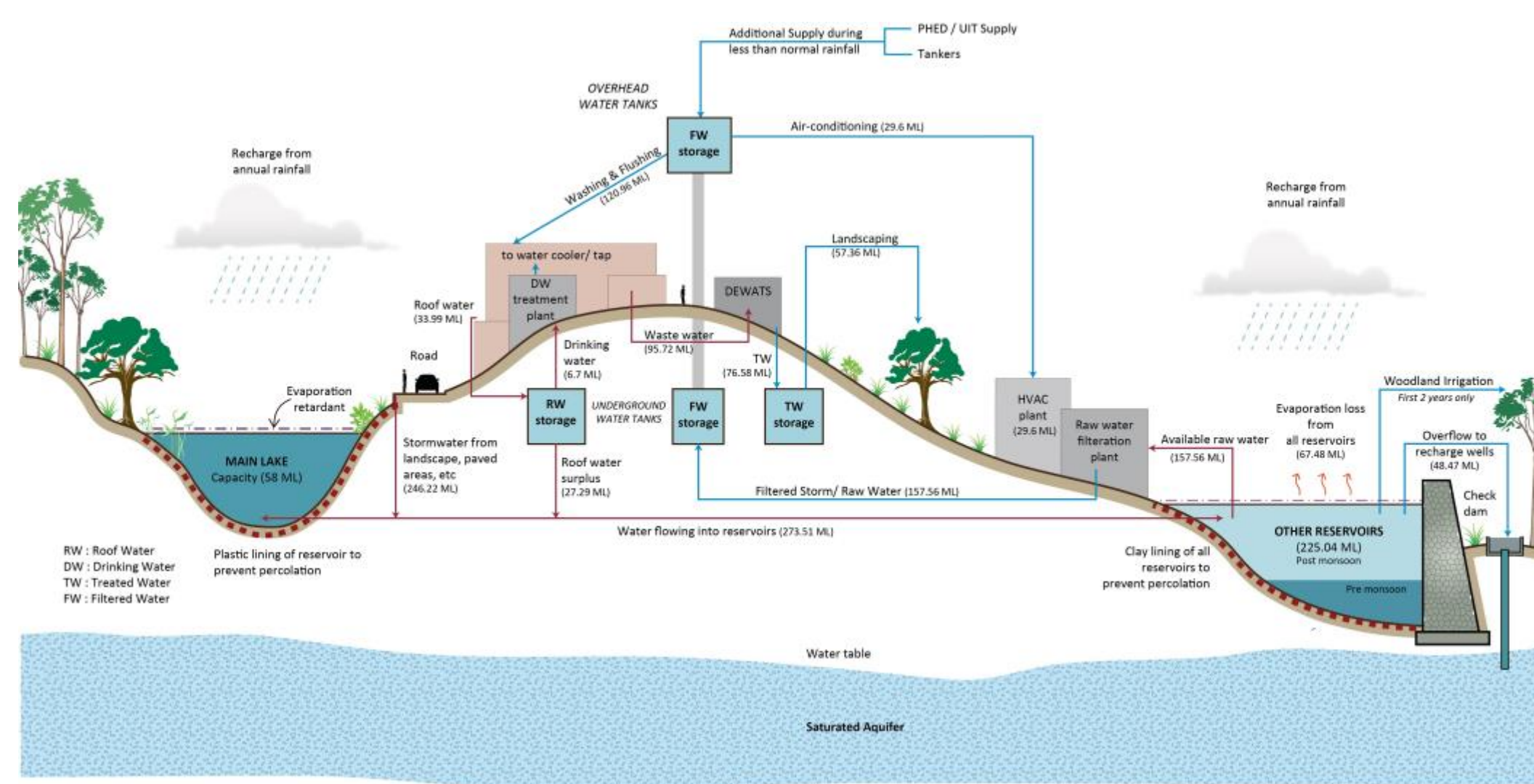
The concept of landscape for an educational campus is akin to that for a temple: a temple of learning that fosters creativity, encourages search for knowledge through introspection and discussion, accepts steward-ship of nature and culture, and becomes a womb of future thoughts.

**Scope of work :**

Earthscapes prepared the Concept Design, Schematic Design, Design Development, Tender drawings and Specifications along with periodic site visits during installation stages.

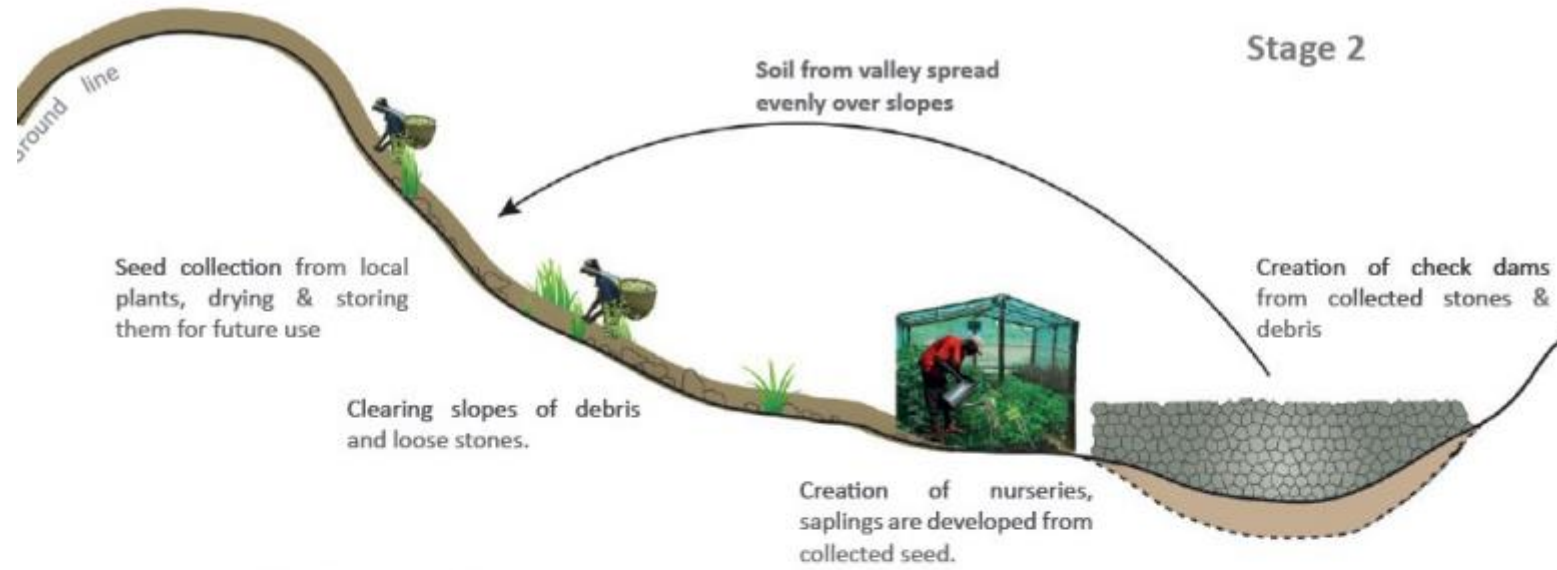




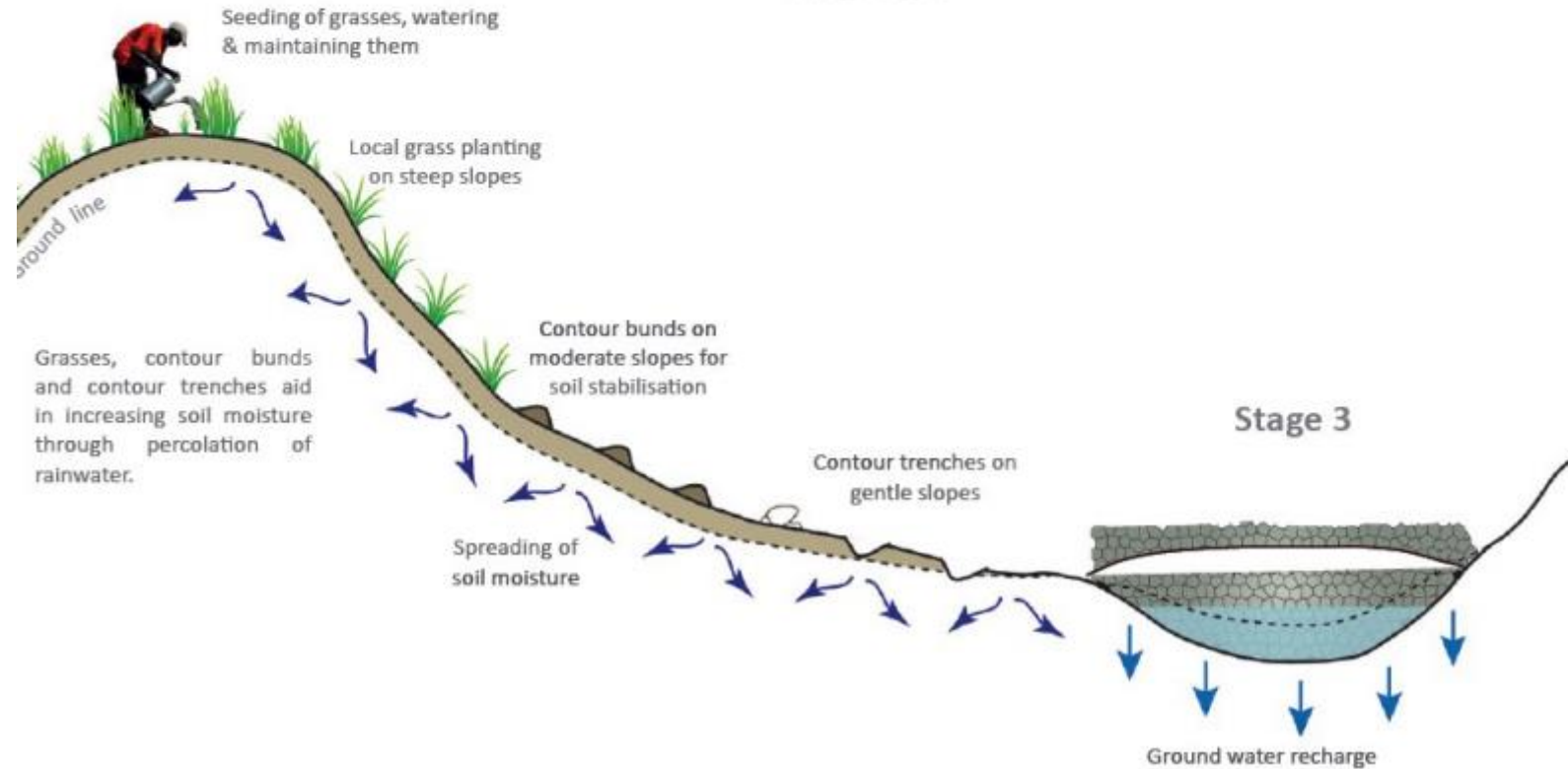




## Stage 2



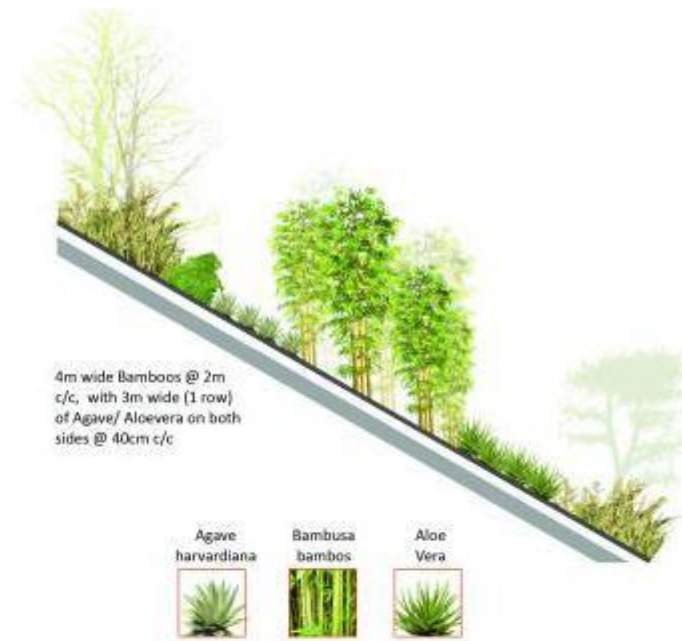
## Stage 3







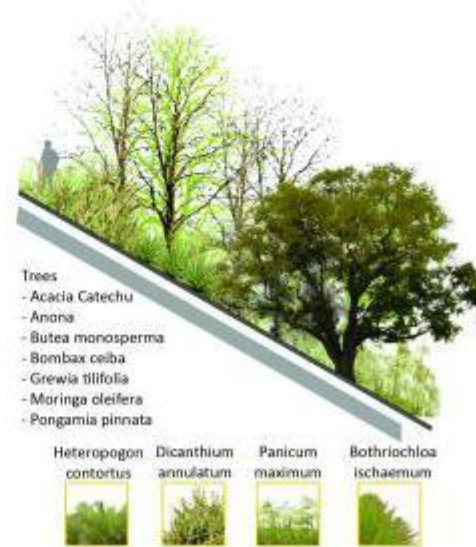
WATERBODY EDGE



FIREBREAKS



STEEP SLOPE



MODERATE SLOPE









WOODLAND TRAILS & BUNDS.



# Pithawala College





## Project Details

### Client

C K Pithawala College

### Location

Surat, India

### Area

4000 sqm

### Date

2017

### About:

Earthscapes designed the entry experience for a large college campus including drop off zones.

### Scope of work :

Earthscapes prepared the Concept Design, Schematic Design, Design Development, Tender drawings and Specifications along with periodic site visits during installation stages







to see our other work,  
please visit:  
<https://www.earthscapes.in/work>