

SMRITIVAN

EARTHQUAKE MEMORIAL, BHUJ

Architect:	Rajeev Kathpalia
Project Team:	Piyas Choudhuri, Divya Gunnam, Vikas Mittal, Rajesh Suthar, Micky Solanki, Purshottam. Bakrania, Natubhai Panchal, Kiritbhai Panchasara, Kirit Bhavsar, Anand Sonecha, Anish Pillai, Suketu Shah, Mohinder Singhal.
Structural Consultant:	Vinod Shah Consulting Engineering Pvt. Ltd
Mechanical Consultant:	Jhaveri Associates
Roads and pathways Consultant:	Arhmm Infra Consultants LLP
Landscape Consultant:	Earthscape Consultancy Pvt. Ltd

Vastu Shilpa Consultants

'Sangath' Thaltej Road,
Ahmedabad 380 054, INDIA

Phone: +91 79 27451555

E mail: vsc@sangath.org

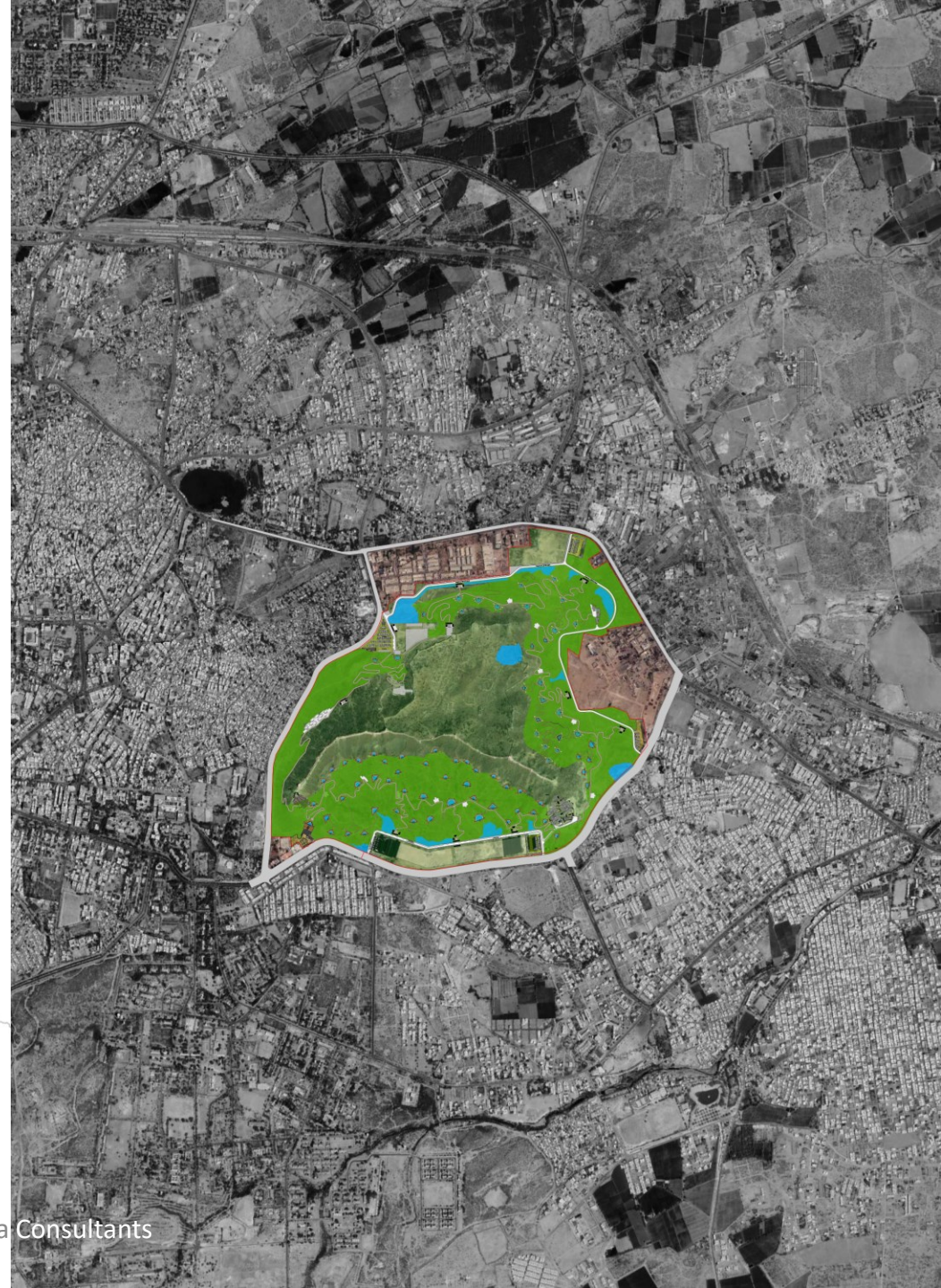
GUJARAT EARTHQUAKE

In the early hours of January 26, 2001, an earthquake that lasted for but a few seconds in the state of Gujarat wiped out 13,805 lives and with that destroyed property and infrastructure worth billions.

KUTCH (Tortoise)

The region derives its name from the shape and morphology of the land claiming that a geological fold brought the 'tortoise' out of the sea! The central ridge that runs from east to west, on which the town of Bhuj is situated forms the hump of the tortoise. This ridge created a gradient for the rivers to flow south and north into the sea. For much of its geological history, Kutch was an island, but in the 12th century, it had its northern sea border cut off by tectonic shifts, leaving the section of water to dry out and turn into what is today a vast white desert - The Rann.

Kutch's ecology, economy, culture, rituals, social structure, festivals and struggle for survival all revolves around water, interlinked with water and interdependent on water.



REGENERATION

All over the world, cultures commemorate their loss in disasters, by keeping relics, memorials and building museums for remembrance of what has past. Our short but precise brief by the then Chief minister of Gujarat, Shri Narendra Modi was to “Plant a tree for each victim”

It symbolized rebirth, renewal and hope, the beginning of the journey of life once again. The planting of trees also suggested the making of a forest. **How better to commemorate loss of human life than through a symbolic act of regeneration?** forest. A **biodiverse self-sustaining ecosystem** that would over time need very little maintenance. The forest of trees also symbolizes the diversity of people.

This assistance is to identify local species, identify the paths that water flows, the soil and nutrients that the water collects on its journey and most importantly identify the places where the water can be collected to leak into the earth. The monsoon and its collection and eventual discharge to feed the trees is one kind of journey – a journey of nourishment, perpetuation and continuity, a journey of hope and delight.

Thus, the other journey was to link these leaking reservoirs where the names of the victims would be enshrined, by paths that the pilgrims would traverse and eventually rest, the views they would encounter, the horizon they would contemplate and eventually the space in which reflection and contemplation may perhaps happen.

Forest
Rebirth
Plurality
Adaptation
Evolution
Transformation
Celebration through Biodiversity

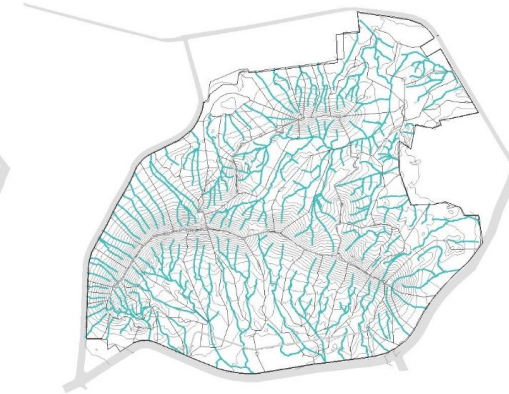


Existing Site mapping

1. Gate
 2. Encroachments
 3. Fort wall
 4. Fire Station
- Proposed important nodes

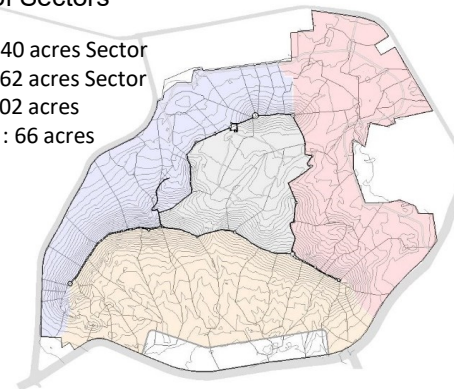


Catchment analysis

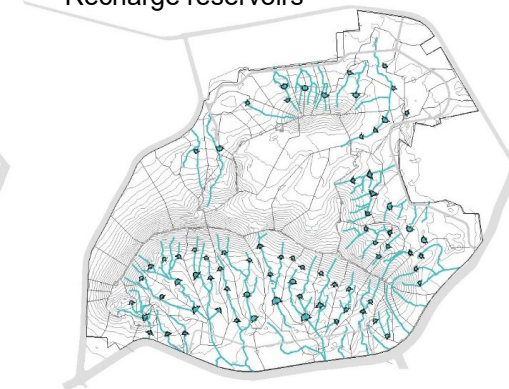


Division of Sectors

Sector A : 140 acres
Sector B : 162 acres
Sector C : 102 acres
Fort Sector : 66 acres



Recharge reservoirs



MASTERPLAN

LEGEND

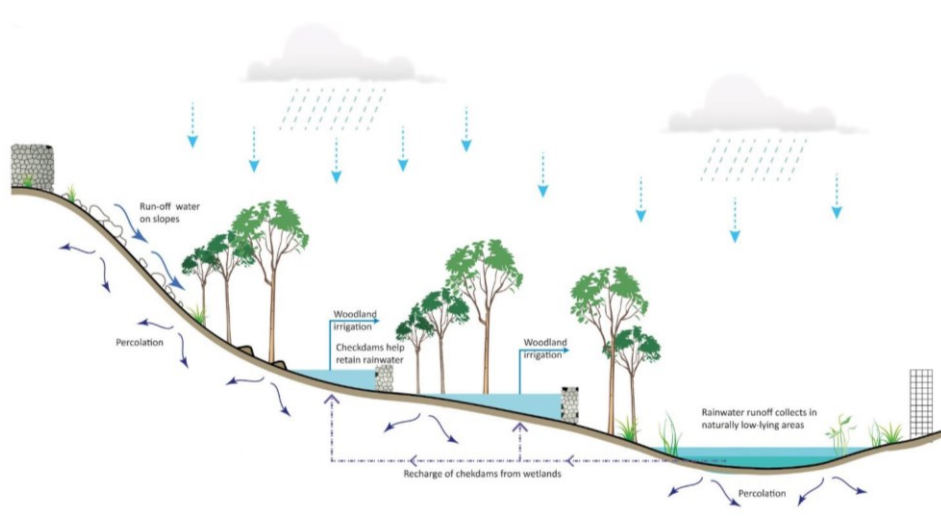
- 1. Sun Point
- 2. Library
- 3. Regional S
Museum
- 4. Lake Front
- 5. Festival Gr
- 6. Solar Park
- 7. Smritivan
- 8. Smritivan
- 9. Eco Park
- 10. Parking
- 11. Conferenc
Art Facility



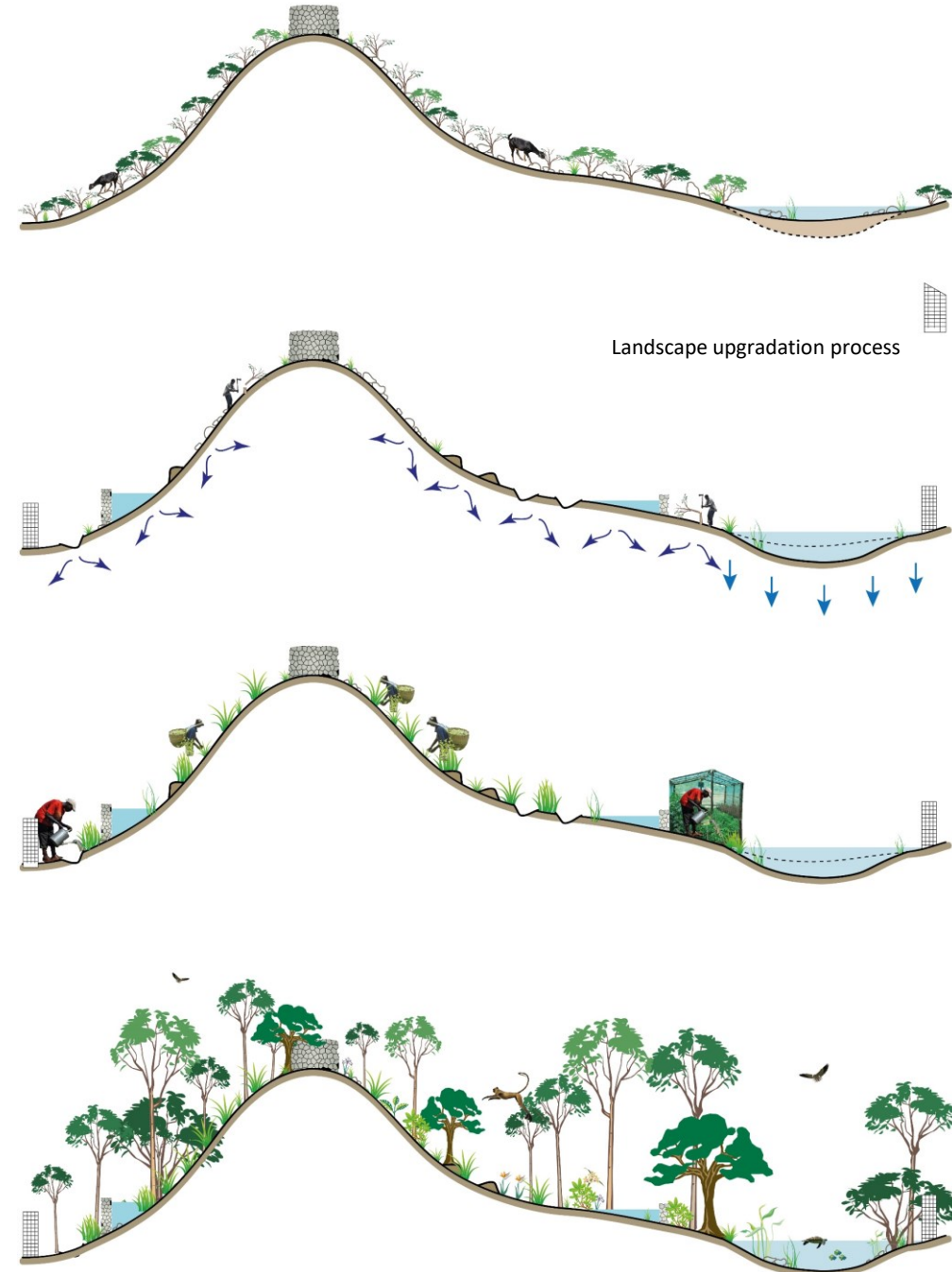
A JOURNEY OF NOURISHMENT, PERPETUITY AND CONTINUITY

As the park matures it will become a place of not only pilgrimage but also a place of leisure and recreation for the growing population of Bhuj. Much like the Central Park in New York, a breathing lung for the city and a place of reflection and repose for all citizens.

A timeless knowledge is applied at Smriti Van, something that has always been done here: the water flowing is intercepted on its way and stored. The reservoirs are of different dimensions and forms in relation with the slope and the shape of the precise place where they are installed.

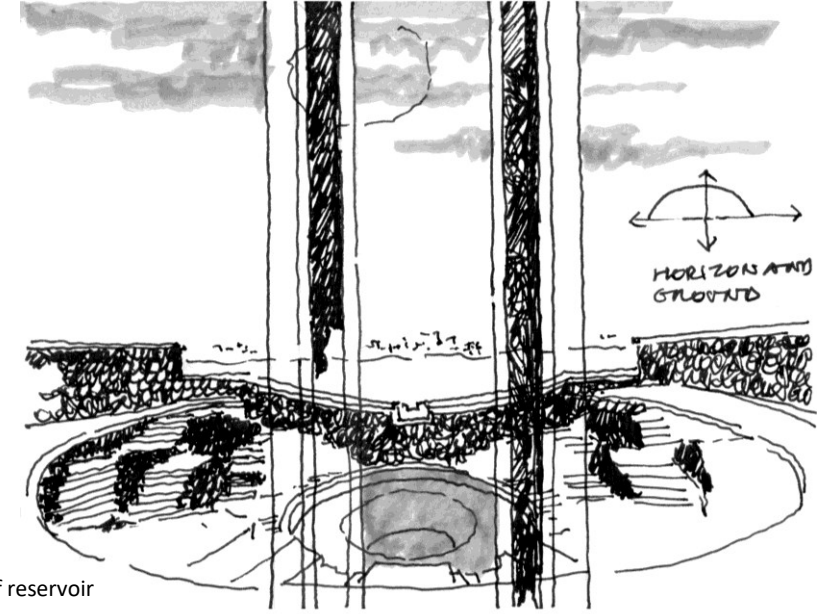


Schematic Section through the site illustrating water and plantation strategy

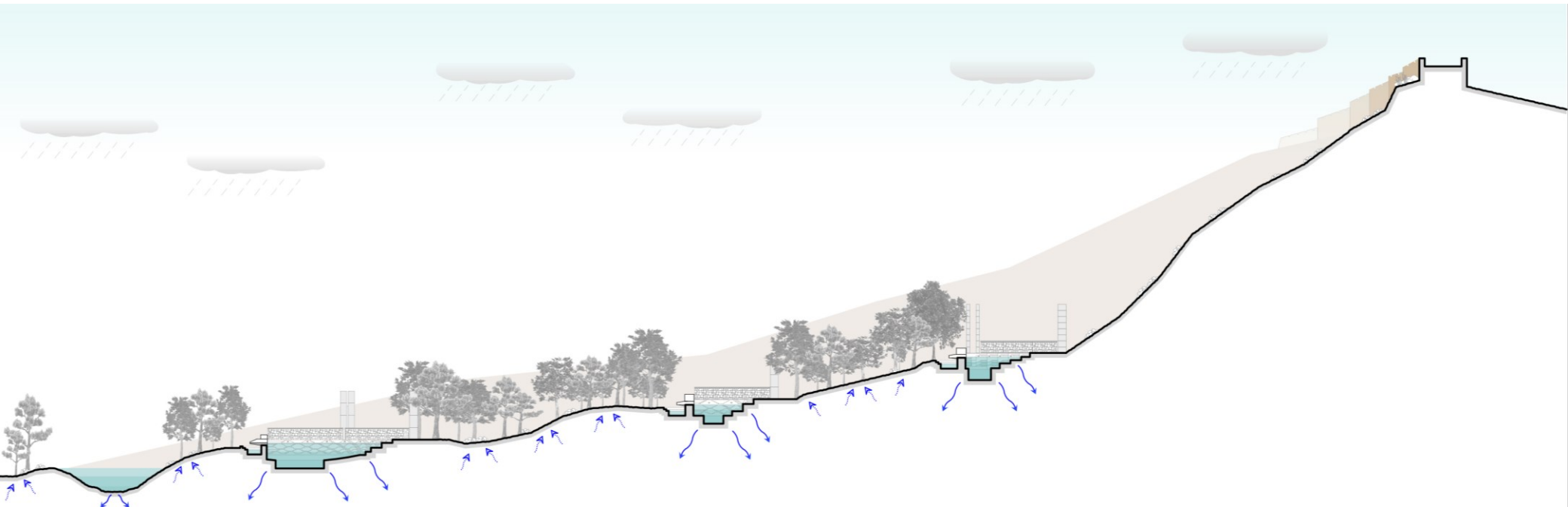


A JOURNEY OF NOURISHMENT, PERPETUITY AND CONTINUITY

The master plan envisages 81 reservoirs to collect the runoff of the Bhujiyo Dungar. The overflow of each reservoir goes to the next and eventually into a series of wetlands along the periphery of the site. It is expected that the wells outside our site will benefit from this recharge and their water levels increase. It is also expected that water that used to overflow from the site and flood the surrounding area in the monsoons will now be better contained especially considering that the city has grown all around the site and the land is getting occupied by buildings. The reservoirs are of different dimensions and forms in relation with the slope and the shape of the precise place where they are installed.



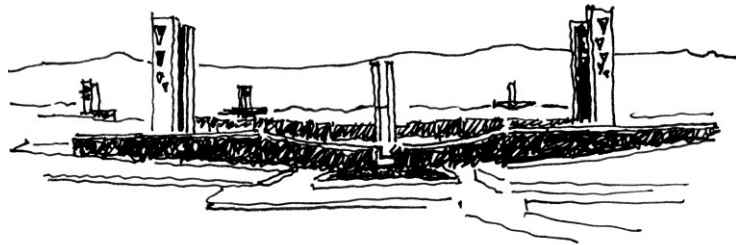
Conceptual Sketch of reservoir



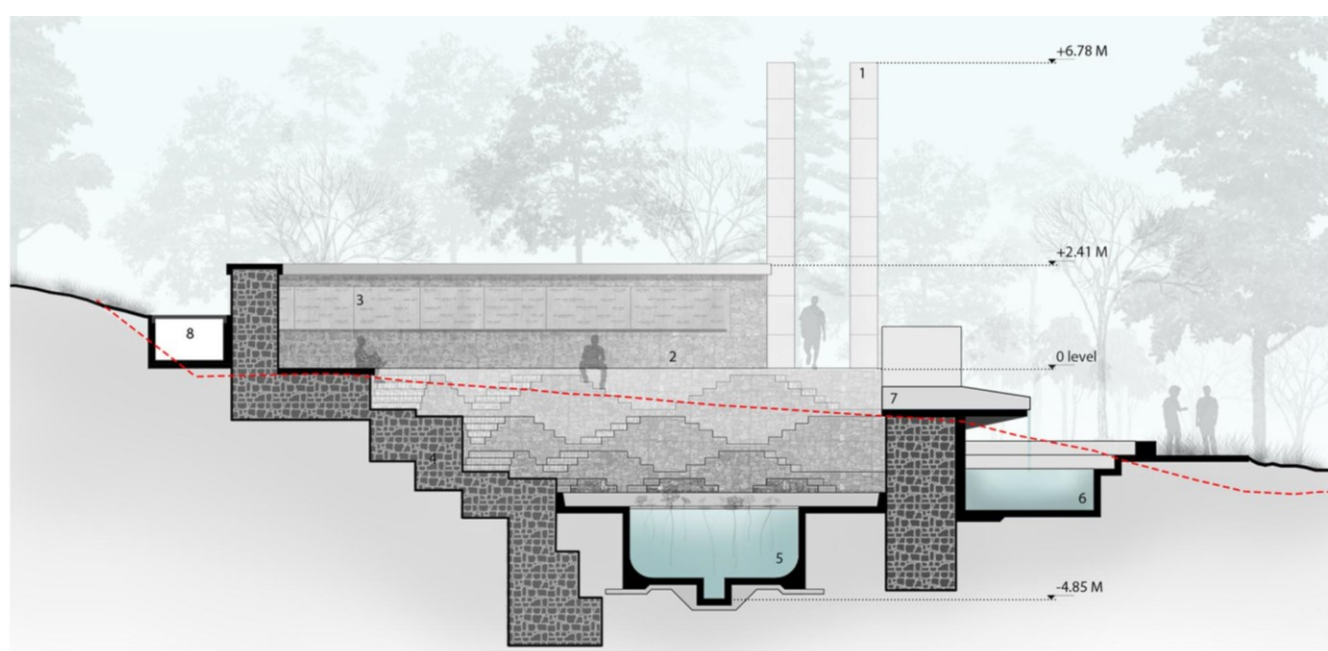
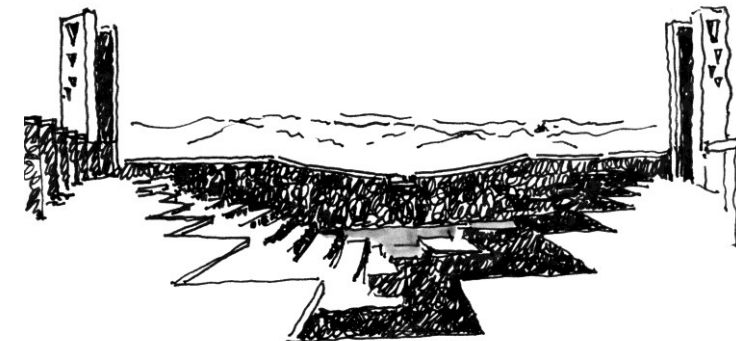
Schematic Section through the site illustrating water and plantation strategy

RECHARGE RESERVOIRS

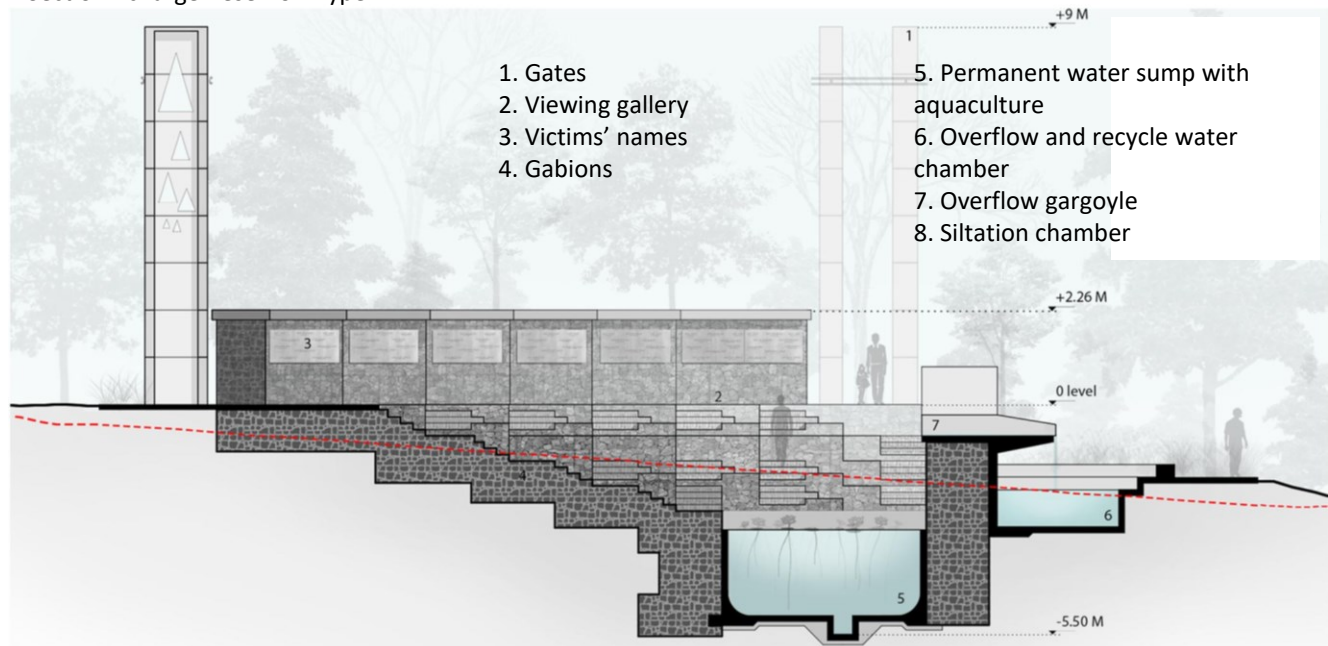
The reservoirs are made of gabions which are entirely without mortar and thus allow for the arresting of rain water of the watersheds but allow it to dissipate into the ground slowly, thus allowing the root system of the trees to draw upon it. Over time, the gaps in the stone are filled up by the alluvium that the water brings in and seeds trapped in it sprout plants. This not only consolidates the gabion structure but in time almost effaces the built to merge and become one with the landscape.



Conceptual Sketch of the reservoir



Section - charge Reservoir Type 4



- 1. Gates
- 2. Viewing gallery
- 3. Victims' names
- 4. Gabions

- 5. Permanent water sump with aquaculture
- 6. Overflow and recycle water chamber
- 7. Overflow gargoyle
- 8. Siltation chamber

PLANTING DESIGN- PHASE 1

The plants will bloom and have a unique aura in every changing season. The whole landscape will articulate various colors of all the seasons:

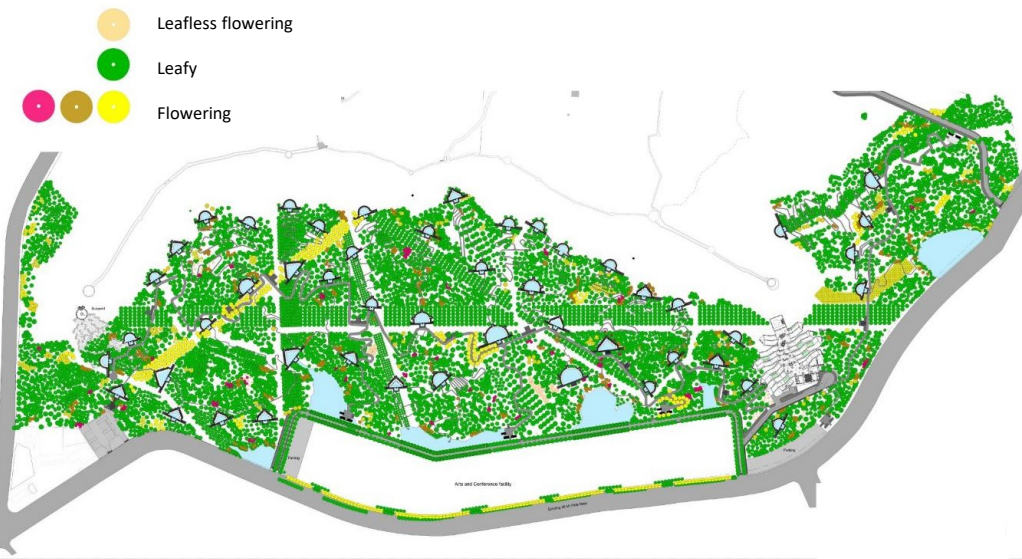
In summer, most areas will be leafy with a few flowering trees.

In winters, there will be a wonderful display of several flowering trees as well as a huge number of leafless trees.

And in monsoon, most of the areas are completely leafy, thus, marking the climax of the landscape



Plantation as visualised in monsoon



Plantation as visualised in summer



Plantation as visualised in winter



PLANTING DESIGN- PHASE 2

The plants will bloom and have a unique aura in every changing season. The whole landscape will articulate various colors of all the seasons:

In summer, most areas will be leafy with a few flowering trees.

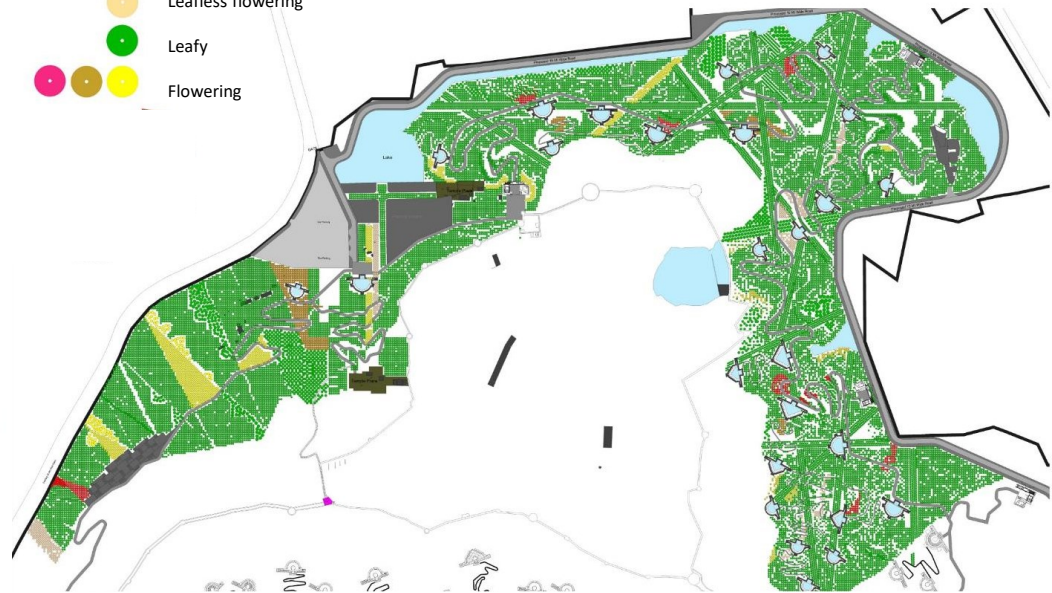
In winters, there will be a wonderful display of several flowering trees as well as a huge number of leafless trees.

And in monsoon, most of the areas are completely leafy, thus, marking the climax of the landscape

- Leafless
- Leafy
- Flowering



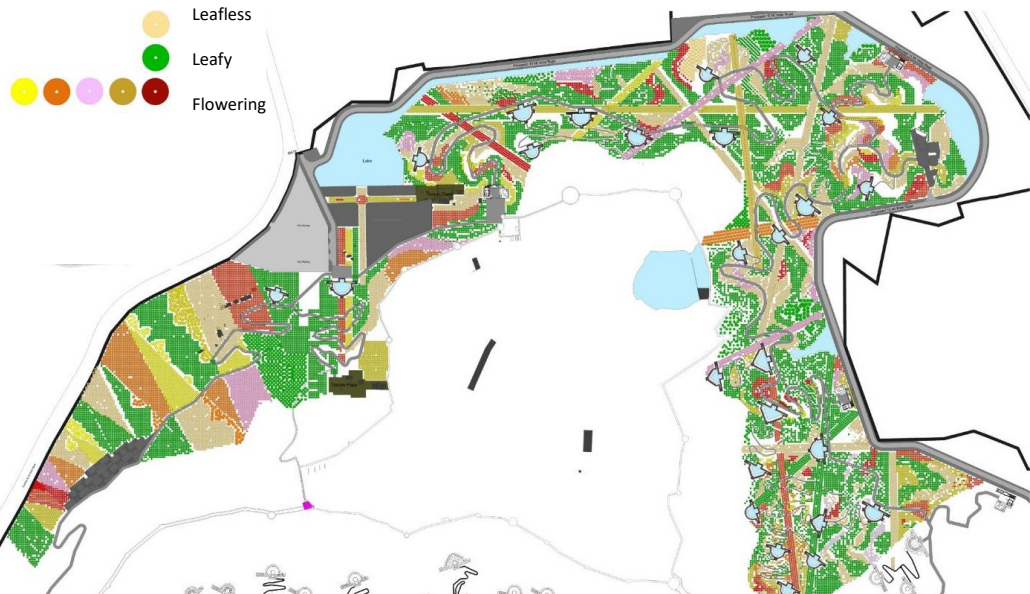
- Leafless flowering
- Leafy
- Flowering



Plantation as visualised in monsoon



Plantation as visualised in summer

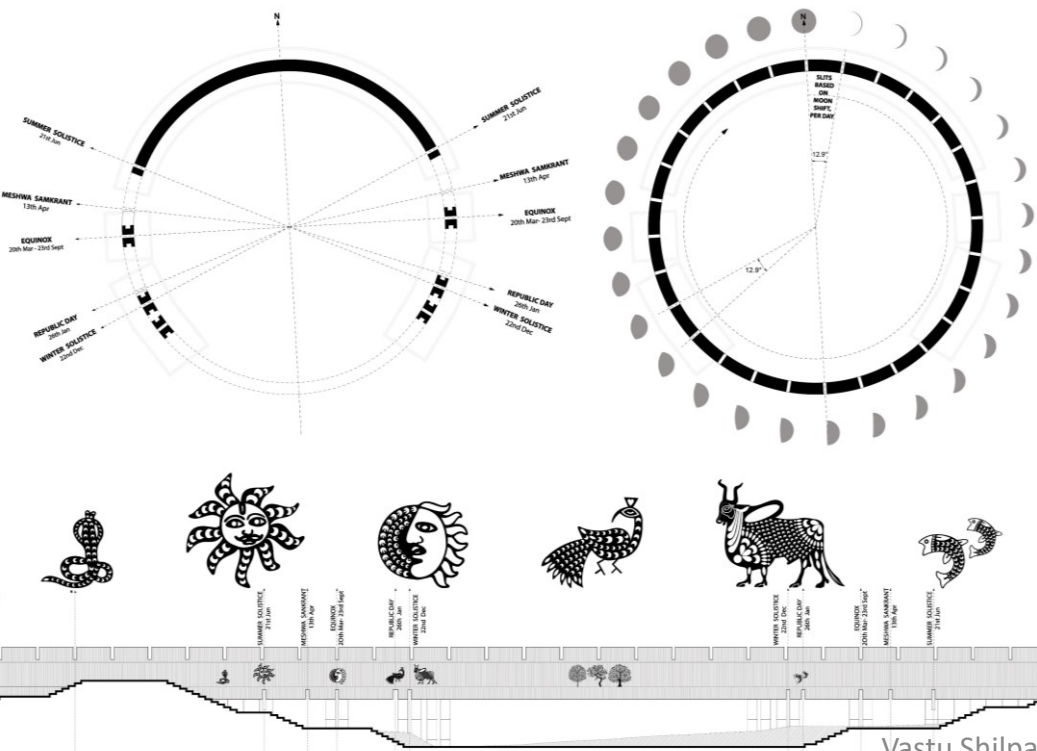


Plantation as visualised in winter

SUN POINT

The carvings and slits in the circular crown of the structure anchors a joyful journey through the lunisolar calendar with it's festivals and special days of the year. The cuts in the solid body share a dialogue with the sun rays creating a symbolic play of light and shadow pertaining to the significance of the day.

All the meandering paths between the reservoirs finally lead to the one that ascends the hill of the sun point.



MUSEUM

The museum anchors its journey within the city of Bhuj, showcasing its unique heritage, culture and crafts and further connects to Kutch's many villages and wild life sanctuaries. The proposed museum traces the roots of Kutch's many crafts and skills and is thematically distributed in the many galleries that house it.

This central spine is like a verandah and allows public events to happen even when the museum is closed. The architectural complex and Plazas lay along the terrain of the Bhujia Hills and give the user the experience of a snaking path to the top. Here terraces and volumes are linked by these open plazas.

